

R.P.M.

3000

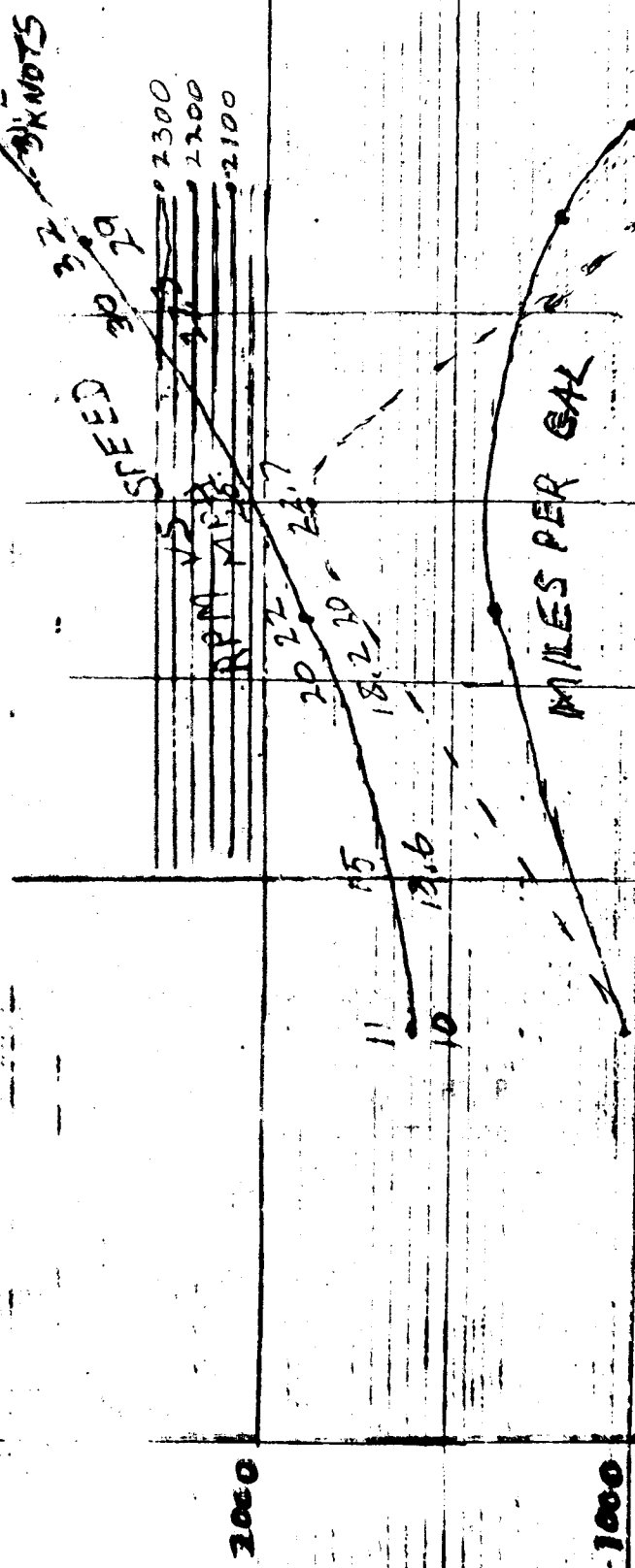
SEA RAY 3900

375 H.P. CATS

CRUISE 25-27 MPH

23-24 KTS

2100-2200 R.P.M.



2000

1000

MPG

2

# 3208 Marine Propulsion 210 - 435 hp

CATERPILLAR

Turbocharged-Aftercooled - Separate Circuit Aftercooling 30°C (86°F) Sea Water

Rating Level	B	E	D
Rated Power	2800	2800	2800
Engine Power**	324 kW (435 hp)	280 kW (378 hp)	284 kW (340 hp)
@ rpm	441 mhp	380 mhp	348 mhp

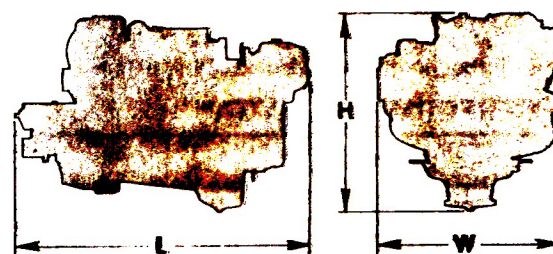
mm	1000	1200	1400	1600	1800	2000	2200	2400	2600
BW	324	221	140	280	176	102	284	160	93
LA	229	209	213	238	217	202	231	213	201
LAr	88.5	85.1	35.5	79.5	45.5	24.5	69.7	40.5	22.3

hp	435	296	188	378	236	137	340	214	124
gal/hr	23.4	14.5	9.4	21.0	12.0	6.5	18.4	10.7	5.9

\*Represents performance along a typical fixed pitch propeller curve.  
 \*\*Power rated in accordance with NMMA procedures as crankshaft power.  
 For units equipped with Caterpillar-supplied marine gears, reduce crankshaft power by 3% for propeller shaft power.  
 Fuel use reflects SAE standards. Fuel use reflecting ISO standards is typically 2-3% less. Consult your Cat representative for details.

## MARINE TRANSMISSION

MARINE TRANSMISSIONS	RATIOS	DRY WEIGHT kg (lb)
MG502-1	1.54:1, 2:1	73 (160)
MG506-1	2.47:1	68 (150)
MG507-1	1.5:1, 1.97:1, 2.5:1, 2.96:1	109 (240)
MG507A	1.57:1, 1.98:1, 2.54:1, 1.77:1	159 (350)
MG507A	1.5:1, 1.98:1, 2.54:1	159 (350)



TA Shown with MG507

## DIMENSIONS

	L		H		W	
	mm	in	mm	in	mm	in
MG502-1, MG506-1 (TA)	1499	59.0	922	36.3	963	37.9
MG502-1, MG506-1 (T)	1499	59.0	1011	39.8	963	37.9
MG507, MG507A (T)	1524	60.0	1011	39.8	963	37.9
MG507, MG507A (TA)	1534	60.4	1019	40.1	965	38.0

## STANDARD ENGINE EQUIPMENT

Air Intake - dry-type, single stage air cleaner with service indicator, air fuel ratio control - 435 hp  
 Cooling - transmission oil cooler, heat exchanger, engine oil cooler, watercooled exhaust manifolds, auxiliary sea water pump, expansion tank, thermostats  
 Flywheel and Flywheel Housing (SAE No. 3)  
 Fuel - filter, priming pump, shutoff solenoid (ETR)  
 Governor - mechanical  
 Lubricating - oil filter, dipstick  
 Starting - 12 volt electric, tachometer drive, 12 volt 51 ampere alternator  
 Torsional Vibration Damper

## ACCESSORY EQUIPMENT

Air/Fuel Ratio Control - excluding 435 hp  
 Alternator - belt driven, 24 volt 35 ampere, 12 volt 35 ampere  
 Exhaust - 6" watercooled elbow  
 Flexible Engine Mounts  
 Front crankshaft mounted pulley (single or three groove)  
 Protection Devices - oil pressure and water temperature contactors  
 Starting - 24 volt and 12 volt

## RATING CONDITIONS

Ratings are based on SAE J1349 standard conditions of 100 kPa (29.61 in Hg) and 25°C (77°F). These ratings also apply at ISO 3048/1, DIN 8271 and BS 5514 standard conditions of 100 kPa (29.61 in Hg), 27°C (81°F) and 80% relative humidity.  
 Fuel Rates are based on fuel oil of 35° API (16°C (60°F)) gravity having an LHV of 42 780 kJ/kg (18,300 Btu/lb) when used at 20°C (68°F) and weighing 838.9 g/liter (17.001 lb/U.S. gal).

Materials and specifications are subject to change without notice.

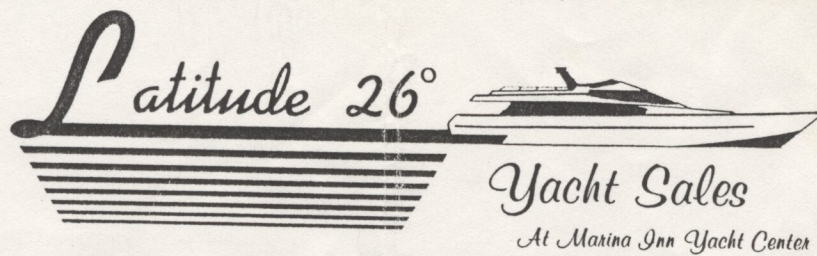
The International System of Units (SI) is used in this publication.

LEH M2336 (7-92)  
 Supersedes LEH M1083

© 1992 Caterpillar Inc.

Printed in U.S.A.





# CLOSING STATEMENT

DATE: December 9, 1991

VESSEL: 39' 1987 Sea Ray "D Boat"

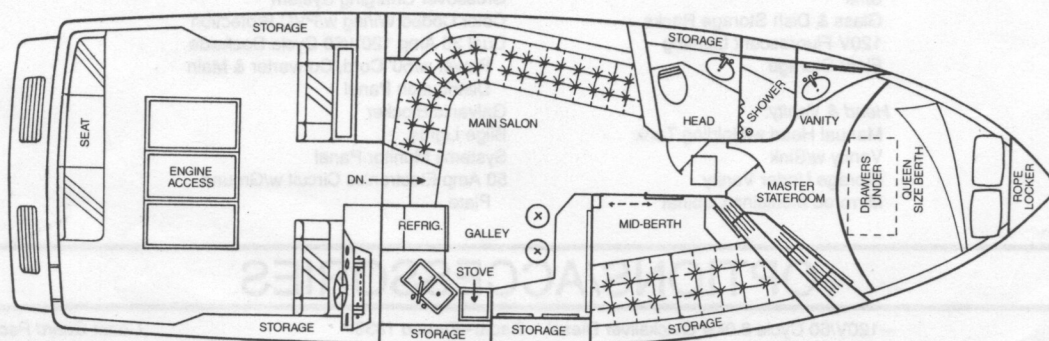
SELLER: Baird Mason  
125 N. Riverside Dr.  
Pompano Beach, Fl. 33062

PURCHASER: E. L. Tidd  
Box 432  
Zionsville, Ind. 46077

Purchase Price: . . . . .	\$125,000.00
Florida State Sales Tax (6%): . . . . .	exempt
Total: . . . . .	\$125,000.00
Brokerage Commission: . . . . .	\$ 12,500.00
Net to Seller: . . . . .	\$112,500.00
Total: . . . . .	\$125,000.00
Deposit: . . . . .	\$ 12,000.00
Balance Due To Seller: . . . . .	\$ 16,263.11
Balance Due @ Closing. . . (From Buyer) . . . . .	\$113,000.00
Loan Payoff: . . . . .	\$ 96,236.89



# 390 EXPRESS CRUISER



**BOATLAND**

125 FISHERMANS WHARF  
FORT PIERCE, FLORIDA 34950  
465-8800

*Sea Ray®*  
A **BRUNSWICK MARINE** Company

## SPECIFICATIONS

Hull Length .....	39' 0"
Overall Length (w/Std. Platform & Bow Pulpit) .....	41' 10"
Beam .....	13' 11"
Draft (Inboards) .....	28"
Dry Weight--Standard Power (Lbs.) .....	16,400
Fuel Capacity (Gallons) .....	300
Water Capacity (Gallons) .....	100
Holding Tank (Gallons) .....	20

The specification measurements are approximations and subject to variance.



# 390 EXPRESS CRUISER

## 1991 FEATURES AND STANDARD EQUIPMENT

### Hull & Deck Features:

Arctic White Gelcoat  
 Boot Stripes  
 Stainless Steel Bow Rail  
 Welded Stainless Steel Stanchions  
 Welded Stainless Steel Deck Rails  
 Navigation Lights  
 Large 4 Bolt Stainless Steel Cleats  
 Stainless Steel Deck Fill Plates  
 PVC Rub Rail w/Stainless Steel Insert  
 Teak Aft Deck Plate  
 Full Swim Platform w/Ladder  
 Brass Threaded Garboard Drain Plug  
 Translucent Deck Hatches w/Screens  
 Foam Filled Under Floor Areas  
 Insulated Engine Compartment  
 Gel Coated Bilge Area  
 Bottom Paint  
 Meets Applicable USCG & ABYC Standards  
 NMMA Certification  
 Vac Pac

### Cockpit Features:

Self Bailing Fiberglass Cockpit  
 Cockpit Side Panel Storage  
 Indirect Cockpit Lighting  
 Double Helm and Companion Seats w/Aft Facing Cockpit Seats  
 Convenience Storage Seat Bases  
 Transom Door  
 Fiberglass Sport Spoiler  
 Cockpit Bolsters

### Cabin Features:

12V Directional Lighting  
 12V Indirect Cabin Lighting  
 Deep Pile Floor Carpeting  
 Throw Pillows  
 Hand Crafted Cherry Trim  
 Mini Blinds & Door Covers  
 Bar Stools (2)

### Forward Stateroom:

Full-Sized Bed w/Pillows, Sheets & Coordinated Spread  
 Hanging Locker  
 Side Storage Shelves  
 Rope Locker Access  
 Vanity w/Sink  
 Storage Under Bed  
 Floor Storage Compartment  
 Forward Hatch Step

### Starboard Stateroom:

Convertible Sofa  
 Hanging Locker  
 Built-In Night Table  
 Built-In Storage  
 Convertible Aft Bulkhead

### Salon Area:

Convertible Sleeper Sofa w/Storage Below  
 Hi-Lo Dining/Cocktail Table  
 Built-In Storage  
 120V Fluorescent Lighting

### Galley:

Three Burner Electric Stove and Microwave (120V Only)  
 120V/12V Refrigerator/Freezer (6.2 Cu. Ft.)  
 Galley Storage Drawers  
 Sink  
 Glass & Dish Storage Racks  
 120V Fluorescent Lighting  
 Floor Storage

### Head & Vanity:

Manual Head w/Holding Tank  
 Vanity w/Sink  
 Storage Under Vanity  
 Mirrored Medicine Cabinet

### Shower w/Separate Shower Stall

Hot Water System  
 Full-Length Door Mirror

### Windshield & Canvas:

Side-Vented Windshield  
 Sliding Cabin Deck Windows  
 Window & Hatch Screens  
 Cabin Hull Windows  
 Color Coordinated Sunbrella Top w/Boot

### Systems:

Automatic Bilge Pumps (2)  
 High Water Bilge Alarm & Pump  
 Automatic Shower Sump  
 Electric Bilge Blowers (2)  
 Hydraulic Steering  
 Backlit Switch Panel w/Illuminated Toggles, Circuit Breakers & Dimmer Control  
 Custom Sea Ray Backlit Instrumentation w/Low Glare Blue Night Lighting  
 Compass & Hourmeters  
 Engine Synchronizer  
 Dual Air Horn  
 Wipers (2)  
 Dual Lever Binnacle Controls  
 105 Amp Sealed Batteries (3) & Lockable On/Off Switches  
 Battery Box w/Cover  
 Emergency Start System  
 Crossover Charging System  
 Color Coded Wiring w/PVC Protection  
 Dual 30 Amp 120V/60 Cycle Dockside Power w/50' Cord, Converter & Main Distribution Panel  
 Galvanic Blocker  
 Bilge Lights  
 Systems Monitor Panel  
 50 Amp Electronics Circuit w/Ground Plate

Aluminum Fuel Tanks w/Fuel Filters  
 Siphon Valves & Electric Sending Unit  
 Halon System  
 Engine Alarms (Water & Oil)  
 Pressure Hot Water System w/Exchanger  
 Crossover Fuel System  
 Racor Filters/Heat Exchanger & Fuel Shut-Off Valve (Diesel)  
 Engine Drip Sumps  
 Ship's Bell  
 Power Vents--Head & Galley  
 Fresh Water Wash Down w/Cockpit Shower & Dockside Water Inlet  
 Slip Stream Exhaust/Lift System Mufflers  
 12 Volt Receptacle

### Underwater Gear:

Bonding System  
 Manganese-Bronze Rudders and Struts  
 Stainless Steel Prop Shafts  
 Zinc Hull Plate  
 Flush Integral Shaft Logs  
 Seacocks On All Underwater Fittings  
 Sea Water Strainers  
 Hydraulic Trim Tabs  
 Propellers

### Engines:

Twin 7.4L MerCruiser<sup>®</sup> Inboards  
 (T-340 HP)

## OPTIONS/ACCESSORIES

### Engines Option:

Twin 3208TA Caterpillar<sup>®</sup> Diesel Inboards (T-375 HP)

### Canvas Package:

Side Curtains  
 Aft Cover  
 Forward Deck Sun Pad  
 Snap-In Carpet Liner  
 7" Remote-Controlled Spotlight  
 Space Saver Coffee Maker  
 120V/60 Cycle Ice Maker (in Cockpit) (Domestic)  
 220V/50 Cycle Ice Maker (in Cockpit) (Int'l)  
 Vacuum Flush w/Holding Tank  
 Vacuum Flush w/SanX  
 Dockside SanX Pump Out  
 ITT Electric Direct Overboard Head (Int'l)  
 Direct Overboard Discharge  
 Macerator  
 120V/60 Cycle Air Conditioning/Heating--25,000 BTU - 2 Tons  
 220V/50 Cycle Air Conditioning/Heating--25,000 BTU - 2 Tons (Int'l)  
 Generator--Remote Start w/Muffler, Fresh Water Cooling, Fuel Filter & Sea Water Strainer  
 --120V/60 Cycle 7.0kw Westerbeke Gas  
 --120V/60 Cycle 7.5kw Quicksilver Gas  
 --120V/60 Cycle 9.0kw Westerbeke Gas  
 --120V/60 Cycle 10.0kw Quicksilver Gas

--120V/60 Cycle 8.0kw Quicksilver Diesel  
 --120V/60 Cycle 8.0kw Westerbeke Diesel

Generator--Same as Above, Except 220V/50 Cycle (Int'l)

Aft Lounge Seat  
 Cockpit Wet Bar w/Aft Seat  
 Digital AM/FM Cassette Stereo w/6 Speakers  
 Digital AM/FM Compact Disc Stereo w/6 Speakers  
 120V/60 Cycle Entertainment Center (in Salon):  
 Color Television w/Antenna  
 VCR w/Remote  
 Antenna & TV Coax to Dockside  
 220V/50 Cycle Entertainment Center (in Salon) (Int'l)  
 Master Stateroom 120V/60 Cycle 13" Color TV w/Antenna  
 Master Stateroom 220V/50 Cycle 14" Color TV w/Antenna (Int'l)  
 Telephone Inlet w/50' Cord  
 Depth Finder--Lowrance 3500 Digital w/Inside Mount Transducer  
 VHF Radio--Standard Titan w/8' Antenna  
 Loran C--Datamarine Dart #2502 (Domestic Only)

Radar--Furuno 1830  
 Autopilot--Robertson AP-200 w/Remote  
 Datamarine Electronics Package:

Depth Finder  
 Sumlog  
 Water Temperature Gauge  
 Fresh Water Cooling (Gas Only)  
 Fiberglass Sport Spoiler  
 Rod Holders (2)  
 Docking Lights (12V)  
 Stainless Steel Interior Ladder  
 120V/60 Cycle Wal-Vac  
 220V/50 Cycle Wal-Vac (Int'l)  
 Windlass:  
 Good Free Drop CFD (rope),  
 Maxwell Nilsson VO-700SR (chain) or  
 Lofrans Leopard (chain)  
 French Toe Rail (Int'l)  
 Gray Water System  
 Interior Sunbrella Carpet Runners  
 Coast Guard Package (w/Windlass):  
 Fender Holders (2)  
 Fenders w/Acrylon Covers (2)  
 Fire Extinguishers (2)  
 First Aid Kit  
 Boat Hook  
 Life Jackets (6)  
 Ring Buoy (19")  
 1/2" x 40' Dock Lines (6)  
 Flare Gun

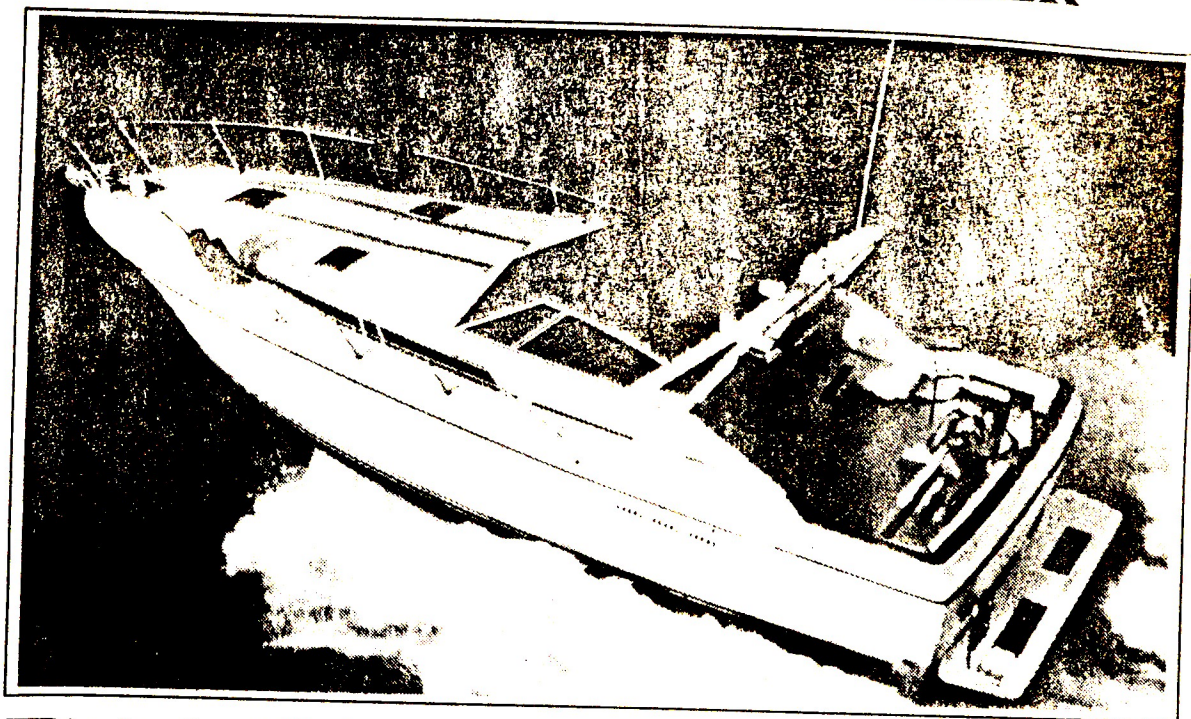
Coast Guard Package (w/o Windlass):  
 Same as Above plus Anchor, Line & Deck Mount w/Hawse Pipe  
 Storage Cradle  
 Water Delivery--Includes Fuel & Coast Guard Package  
 Inland Freight



Note: Not all accessories shown in pictures or described herein are standard equipment or even available as options. Options and features are subject to change without notice. Confirm the availability of all accessories and equipment with an authorized Sea Ray dealer prior to purchase.



# SEA RAY 390 EXPRESS CRUISER



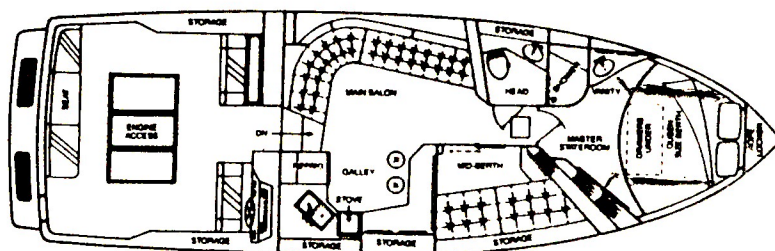
**T**he Sea Ray 390 Express Cruiser has been a popular boat since her introduction in 1984. One of the first of the really big production sportboats, her sleek lines and European styling attracted a lot of attention among upscale buyers and, not incidentally, within the industry itself. Her expansive two-stateroom interior is arranged with a queen berth in the forward stateroom and a combined galley-and-breakfast bar facing the curved settee in the salon. The guest cabin is unique: separated from the galley by a retractable mirrored

bulkhead, the bunk berths can be converted into a sofa during the day and the area used for additional seating within the main cabin. The interior has been updated twice, changing from the original wood-grain mica to teak in 1986 and to the current white mica/teak trim decor in 1988. Outside, the huge cockpit provides seating for as many as ten passengers. A good-running boat, optional Caterpillar 375-hp diesels will cruise the Sea Ray 390 Express Cruiser around 27 knots with a top speed of 31 knots. □

## SPECIFICATIONS

Length.....39'0"  
Beam.....13'11"  
Draft.....2'4"  
Weight.....16,400#  
Clearance.....NA  
Water.....100 Gals.  
Fuel.....300 Gals.  
Cockpit.....NA  
Hull Type.....Deep-V  
Designer.....Sea Ray

Production  
1984-Current



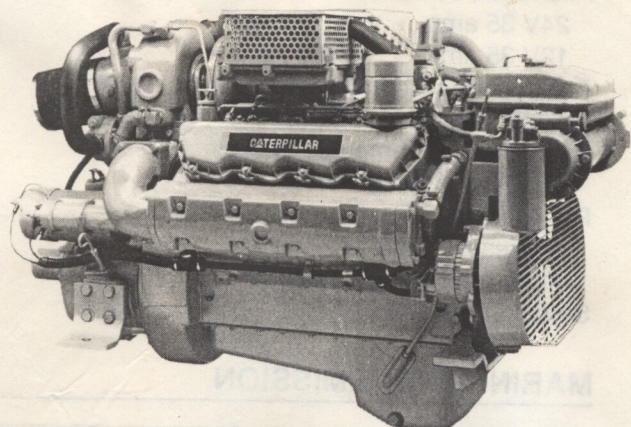


# CATERPILLAR®

## Marine Engine

# 3208

210-435 hp  
2800 rpm



Shown with  
Accessory Equipment



### SPECIFICATIONS

V-8, Four-Stroke-Cycle Diesel	
Bore—mm (in)	114.3 (4.5)
Stroke—mm (in)	127 (5.0)
Displacement—L (cu in)	10.4 (636)
Rotation (from flywheel end)	Counterclockwise
Compression Ratio	16.5:1
435 hp	15.5:1
Capacity for Liquids — L (U.S. gal)	
Cooling System (engine only)	56.8 (15.0)
Lube Oil System (refill)	
NA	12.0 (3.2)
T, TA	15.0 (4.0)
Oil Change Interval — hrs	200
Engine Weight, Net Dry (approx)—kg (lb)	
Naturally Aspirated (NA)	789 (1,740)
Turbocharged (T)	816 (1,800)
Turbocharged-Aftercooled (TA) 375 hp	853 (1,880)
Turbocharged-Aftercooled (TA) 435 hp	943 (2,080)

### PERFORMANCE DATA\*

#### Naturally Aspirated

Rating Level	E	D
Rated rpm	2800	2800
Engine Power** @ rpm	157 kW (210 hp) 213 mhp	157 kW (210 hp) 213 mhp

rpm	2800	2400	1800	2800	2400	1800
kW	157	99	42	157	99	42
g/kW-hr	241	226	246	241	226	246
L/hr	45.0	26.5	12.2	45.0	26.5	12.2

bhp	210	132	56	210	132	56
lb/hp-hr	.396	.370	.403	.396	.370	.403
gal/hr	11.9	7.0	3.2	11.9	7.0	3.2

#### Turbocharged

Rating Level	E	D
Rated rpm	2800	2800
Engine Power** @ rpm	239 kW (320 hp) 325 mhp	224 kW (300 hp) 304 mhp

rpm	2800	2400	2000	2800	2400	2000
kW	239	150	87	224	141	82
g/kW-hr	238	225	217	237	227	215
L/hr	67.9	40.3	22.5	63.2	38.2	20.9

bhp	320	201	117	300	189	109
lb/hp-hr	.390	.369	.356	.388	.373	.352
gal/hr	17.9	10.6	5.9	16.7	10.1	5.5

#### Turbocharged-Aftercooled — Separate circuit aftercooling 30° C (86° F) sea water

Rating Level	E	E	D
Rated rpm	2800	2800	2800
Engine Power** @ rpm	324 kW (435 hp) 441 mhp	280 kW (375 hp) 380 mhp	254 kW (340 hp) 345 mhp

rpm	2800	2400	2000	2800	2400	2000	2800	2400	2000
kW	324	221	140	280	176	102	254	160	93
g/kW-hr	229	209	213	238	217	202	231	213	202
L/hr	88.5	55.1	35.5	79.5	45.5	24.5	69.7	40.5	22.3

bhp	435	296	188	375	236	137	340	214	124
lb/hp-hr	.377	.344	.350	.390	.356	.331	.379	.350	.332
gal/hr	23.4	14.5	9.4	21.0	12.0	6.5	18.4	10.7	5.9

\* Represents performance along a typical fixed pitch propeller curve.

\*\* Power rated in accordance with NMMA procedures as crankshaft power.

For units equipped with Caterpillar-supplied marine gears, reduce crankshaft power by 3% for propeller shaft power.

Fuel use reflects SAE standards. Fuel use reflecting ISO standards is typically 2-3% less. Consult your Caterpillar representative for details.



## STANDARD EQUIPMENT

Air Intake  
 air fuel ratio control – 435 hp  
 dry type, single-stage air cleaner  
 with service indicator

Cooling  
 auxiliary sea water pump  
 engine oil cooler  
 expansion tank  
 heat exchanger  
 thermostats  
 transmission oil cooler  
 watercooled exhaust manifolds

Flywheel and flywheel housing  
 SAE No. 3

Fuel  
 filter, priming pump  
 shutoff solenoid (ETR)

Governor, mechanical

Lubricating  
 oil filter, dipstick

Starting, 12V electric  
 tachometer drive  
 12V 51 amp alternator  
 Torsional vibration damper

## ACCESSORY EQUIPMENT

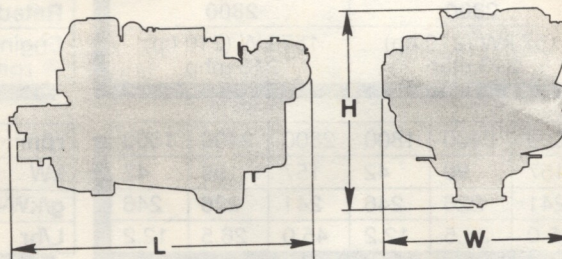
Air/fuel ratio control, excluding 435 hp  
 Alternator, belt driven  
 24V 35 amp  
 12V 35 amp  
 Exhaust, 6" watercooled elbow  
 Flexible engine mounts  
 Front crankshaft-mounted pulley  
 (single or three groove)  
 Protection devices  
 oil pressure and  
 water temperature contactors  
 Starting, 24V and 12V

## MARINE TRANSMISSION

Marine Transmissions	Ratios	Dry Weight kg (lb)
MG502-1	1.54:1, 2:1	73 (160)
MG502	2.47:1	68 (150)
MG506-1	1.5:1, 1.97:1, 2.5:1, 2.96:1	109 (240)
MG507	1.51:1, 1.98:1, 2.54:1, 1.77:1	159 (350)
MG507A	1.51:1, 1.98:1, 2.54:1	159 (350)

## DIMENSIONS

TA shown with MG507



	L		H		W	
	mm	in	mm	in	mm	in
MG502-1, MG502 (NA)	1499	59.0	922	36.3	963	37.9
MG502-1, MG506-1 (T)	1499	59.0	1011	39.8	963	37.9
MG507, MG507A (T)	1524	60.0	1011	39.8	963	37.9
MG507, MG507A (TA)	1534	60.4	1019	40.1	965	38.0

## RATING CONDITIONS AND DEFINITIONS

**Ratings** are based on SAE J1349 standard conditions of 100 kPa (29.61 in Hg) and 25° C (77° F). These ratings also apply at ISO 3046/1, DIN 6271, and BS 5514 standard conditions of 100 kPa (29.61 in Hg), 27° C (81° F) and 60% relative humidity.

**Fuel rates** are based on fuel oil of 35° API [16° C (60° F)] gravity having an LHV of 42 780 kJ/kg (18,390 Btu/lb) when used at 29° C (85° F) and weighing 838.9 g/liter (7.001 lb/U.S. gal).

**E** – For use in pleasure craft with planing hulls, as well as for patrol, pilot and harbor master boats.  
**D** – For use in patrol, customs, police, and some fire boats.

Materials and specifications are subject to change without notice.

LEHM4144 (2-94)  
 Supersedes LEHM2336

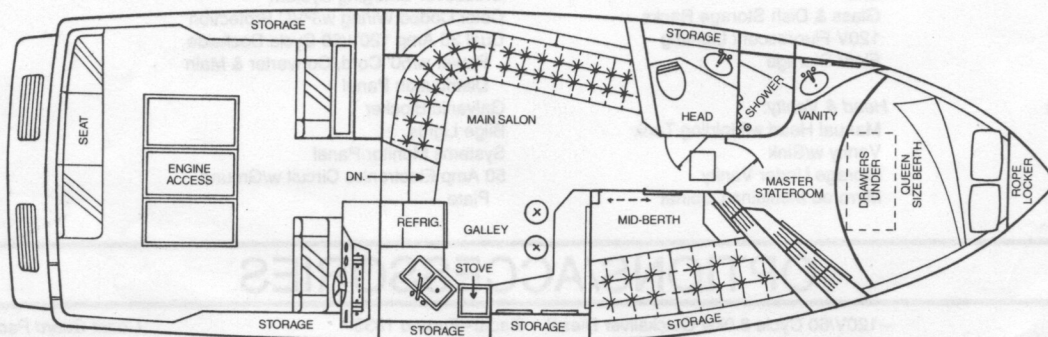
© 1994 Caterpillar

The International System of Units (SI) is used in this publication.

Printed in U.S.A.



# 390 EXPRESS CRUISER



**BOATLAND**

125 FISHERMANS WHARF  
FORT PIERCE, FLORIDA 34950  
465-8800

*Sea Ray*®  
A **BRUNSWICK MARINE** Company

## SPECIFICATIONS

Hull Length .....	39' 0"
Overall Length (w/Std. Platform & Bow Pulpit) .....	41' 10"
Beam .....	13' 11"
Draft (Inboards) .....	28"
Dry Weight--Standard Power (Lbs.) .....	16,400
Fuel Capacity (Gallons) .....	300
Water Capacity (Gallons) .....	100
Holding Tank (Gallons) .....	20

The specification measurements are approximations and subject to variance.

# 390 EXPRESS CRUISER

## 1991 FEATURES AND STANDARD EQUIPMENT

### Hull & Deck Features:

Arctic White Gelcoat  
Boot Stripes  
Stainless Steel Bow Rail  
Welded Stainless Steel Stanchions  
Welded Stainless Steel Deck Rails  
Navigation Lights  
Large 4 Bolt Stainless Steel Cleats  
Stainless Steel Deck Fill Plates  
PVC Rub Rail w/Stainless Steel Insert  
Teak Aft Deck Plate  
Full Swim Platform w/Ladder  
Brass Threaded Garboard Drain Plug  
Translucent Deck Hatches w/Screens  
Foam Filled Under Floor Areas  
Insulated Engine Compartment  
Gel Coated Bilge Area  
Bottom Paint  
Meets Applicable USCG & ABYC Standards  
NMMA Certification  
Vac Pac

### Cockpit Features:

Self Bailing Fiberglass Cockpit  
Cockpit Side Panel Storage  
Indirect Cockpit Lighting  
Double Helm and Companion Seats w/Aft Facing Cockpit Seats  
Convenience Storage Seat Bases  
Transom Door  
Fiberglass Sport Spoiler  
Cockpit Bolsters

### Cabin Features:

12V Directional Lighting  
12V Indirect Cabin Lighting  
Deep Pile Floor Carpeting  
Throw Pillows  
Hand Crafted Cherry Trim  
Mini Blinds & Door Covers  
Bar Stools (2)

### Forward Stateroom:

Full-Sized Bed w/Pillows, Sheets & Coordinated Spread  
Hanging Locker  
Side Storage Shelves  
Rope Locker Access  
Vanity w/Sink  
Storage Under Bed  
Floor Storage Compartment  
Forward Hatch Step

### Starboard Stateroom:

Convertible Sofa  
Hanging Locker  
Built-In Night Table  
Built-In Storage  
Convertible Aft Bulkhead

### Salon Area:

Convertible Sleeper Sofa w/Storage Below  
Hi-Lo Dining/Cocktail Table  
Built-In Storage  
120V Fluorescent Lighting

### Galley:

Three Burner Electric Stove and Microwave (120V Only)  
120V/12V Refrigerator/Freezer (6.2 Cu. Ft.)  
Galley Storage Drawers  
Sink  
Glass & Dish Storage Racks  
120V Fluorescent Lighting  
Floor Storage

### Head & Vanity:

Manual Head w/Holding Tank  
Vanity w/Sink  
Storage Under Vanity  
Mirrored Medicine Cabinet

### Shower w/Separate Shower Stall

Hot Water System  
Full-Length Door Mirror

### Windshield & Canvas:

Side-Vented Windshield  
Sliding Cabin Deck Windows  
Window & Hatch Screens  
Cabin Hull Windows  
Color Coordinated Sunbrella Top w/Boot

### Systems:

Automatic Bilge Pumps (2)  
High Water Bilge Alarm & Pump  
Automatic Shower Sump  
Electric Bilge Blowers (2)  
Hydraulic Steering  
Backlit Switch Panel w/Illuminated Toggles, Circuit Breakers & Dimmer Control  
Custom Sea Ray Backlit Instrumentation w/Low Glare Blue Night Lighting  
Compass & Hourmeters  
Engine Synchronizer  
Dual Air Horn  
Wipers (2)  
Dual Lever Binnacle Controls  
105 Amp Sealed Batteries (3) & Lockable On/Off Switches  
Battery Box w/Cover  
Emergency Start System  
Crossover Charging System  
Color Coded Wiring w/PVC Protection  
Dual 30 Amp 120V/60 Cycle Dockside Power w/50' Cord, Converter & Main Distribution Panel  
Galvanic Blocker  
Bilge Lights  
Systems Monitor Panel  
50 Amp Electronics Circuit w/Ground Plate

Aluminum Fuel Tanks w/Fuel Filters  
Siphon Valves & Electric Sending Unit  
Halon System  
Engine Alarms (Water & Oil)  
Pressure Hot Water System w/Exchanger  
Crossover Fuel System  
Racor Filters/Heat Exchanger & Fuel Shut-Off Valve (Diesel)  
Engine Drip Sumps  
Ship's Bell  
Power Vents--Head & Galley  
Fresh Water Wash Down w/Cockpit Shower & Dockside Water Inlet  
Slip Stream Exhaust/Lift System Mufflers  
12 Volt Receptacle

### Underwater Gear:

Bonding System  
Manganese-Bronze Rudders and Struts  
Stainless Steel Prop Shafts  
Zinc Hull Plate  
Flush Integral Shaft Logs  
Seacocks On All Underwater Fittings  
Sea Water Strainers  
Hydraulic Trim Tabs  
Propellers

### Engines:

Twin 7.4L MerCruiser® Inboards (T-340 HP)

## OPTIONS/ACCESSORIES

### Engines Option:

Twin 3208TA Caterpillar® Diesel Inboards (T-375 HP)

### Canvas Package:

Side Curtains  
Aft Cover

### Forward Deck Sun Pad

Snap-In Carpet Liner  
7" Remote-Controlled Spotlight  
Space Saver Coffee Maker  
120V/60 Cycle Ice Maker (in Cockpit) (Domestic)  
220V/50 Cycle Ice Maker (in Cockpit) (Int'l)  
Vacuum Flush w/Holding Tank  
Vacuum Flush w/SanX  
Dockside SanX Pump Out  
ITT Electric Direct Overboard Head (Int'l)  
Direct Overboard Discharge  
Macerator  
120V/60 Cycle Air Conditioning/Heating-- 25,000 BTU - 2 Tons  
220V/50 Cycle Air Conditioning/Heating-- 25,000 BTU - 2 Tons (Int'l)  
Generator--Remote Start w/Muffler, Fresh Water Cooling, Fuel Filter & Sea Water Strainer  
--120V/60 Cycle 7.0kw Westerbeke Gas  
--120V/60 Cycle 7.5kw Quicksilver Gas  
--120V/60 Cycle 9.0kw Westerbeke Gas  
--120V/60 Cycle 10.0kw Quicksilver Gas

--120V/60 Cycle 8.0kw Quicksilver Diesel  
--120V/60 Cycle 8.0kw Westerbeke Diesel

Generator--Same as Above, Except 220V/50 Cycle (Int'l)

### Aft Lounge Seat

Cockpit Wet Bar w/Aft Seat  
Digital AM/FM Cassette Stereo w/6 Speakers  
Digital AM/FM Compact Disc Stereo w/6 Speakers  
120V/60 Cycle Entertainment Center (in Salon):  
Color Television w/Antenna  
VCR w/Remote  
Antenna & TV Coax to Dockside  
220V/50 Cycle Entertainment Center (in Salon) (Int'l)  
Master Stateroom 120V/60 Cycle 13" Color TV w/Antenna  
Master Stateroom 220V/50 Cycle 14" Color TV w/Antenna (Int'l)  
Telephone Inlet w/50' Cord  
Depth Finder--Lowrance 3500 Digital w/Inside Mount Transducer  
VHF Radio--Standard Titan w/8' Antenna  
Loran C--Datamarine Dart #2502 (Domestic Only)

### Radar--Furuno 1830

Autopilot--Robertson AP-200 w/Remote  
Datamarine Electronics Package:

Depth Finder  
Sumlog  
Water Temperature Gauge  
Fresh Water Cooling (Gas Only)  
Fiberglass Sport Spoiler  
Rod Holders (2)  
Docking Lights (12V)  
Stainless Steel Interior Ladder  
120V/60 Cycle Wal-Vac  
220V/50 Cycle Wal-Vac (Int'l)  
Windlass:  
Good Free Drop CFD (rope),  
Maxwell Nilsson VO-700SR (chain) or Lofrans Leopard (chain)  
French Toe Rail (Int'l)  
Gray Water System  
Interior Sunbrella Carpet Runners  
Coast Guard Package (w/Windlass):  
Fender Holders (2)  
Fenders w/Acrylon Covers (2)  
Fire Extinguishers (2)  
First Aid Kit  
Boat Hook  
Life Jackets (6)  
Ring Buoy (19")  
1/2" x 40' Dock Lines (6)  
Flare Gun

### Coast Guard Package (w/o Windlass):

Same as Above plus Anchor, Line & Deck Mount w/Hawse Pipe  
Storage Cradle  
Water Delivery--Includes Fuel & Coast Guard Package  
Inland Freight



Note: Not all accessories shown in pictures or described herein are standard equipment or even available as options. Options and features are subject to change without notice. Confirm the availability of all accessories and equipment with an authorized Sea Ray dealer prior to purchase.