

# GENESIS

# G2








G2

BETTER DESIGN KEEPS YOU DRY ON THE WATER



INTRODUCING THE NEXT GENERATION OF GENESIS RIBS

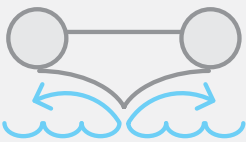
The biggest difference is beneath the surface. Genesis RIBs are manufactured using state-of-the-art injection molds, which enable the highest level of finishing and accuracy, providing detail & features no other process can achieve. Precisely pre-measured DuraLITE™ Composite resin is injected into a 82-ton steel mold with over 8,000 tons of clamp force. The result is a superior one-piece seamless hull that is lightweight and extremely durable. Custom-engineered UV resistant resins are used to create a long lasting boat that has a superior strength to weight ratio over other materials.

FIBERGLASS HULL	ALUMINUM HULL	DURALITE™ HULL
<ul style="list-style-type: none"><li>• 1-5 Year Warranty</li><li>• Impact can puncture the hull</li><li>• Scratches are apparent &amp; can allow for delamination &amp; water gain if not treated</li><li>• Forgiving ride</li><li>• Weight can be heavy if resin not applied efficiently</li><li>• Moderate value</li></ul>	<ul style="list-style-type: none"><li>• 1-5 Year Warranty</li><li>• Impact can permanently dent the hull</li><li>• Scratches are visible &amp; allow for corrosion over time</li><li>• Extremely jarring &amp; uncomfortable ride</li><li>• Lightweight material</li><li>• Expensive</li></ul>	<ul style="list-style-type: none"><li>• 10 Year Warranty</li><li>• Incredibly impact resistant</li><li>• Scratches are less apparent &amp; do not affect hull integrity</li><li>• Extremely forgiving &amp; comfortable ride</li><li>• Very lightweight material</li><li>• Exceptional value</li></ul>
		



> ENVIRONMENTALLY FRIENDLY

Traditional boat hull manufacturing has a polluting process. The injection molding process is entirely environmentally friendly and the materials are recyclable. The result is a durable and virtually maintenance free boat, one you can feel good about owning.



Genesis V-Hull cuts through chop and deflects spray downwards for a drier ride.



The wide bow makes the internal space larger and reduces spay for a drier ride.



A draining, non-skid flat floor has a bilge underneath to keep water away.





# INNOVATION ON THE WATER

> AVAILABLE AS AN OPEN OR CONSOLE  
VERSION, GENESIS HAS MORE FEATURES  
THAN ANY OTHER SMALL RIB.

All 310 and 340 Genesis RIBs are  
offered as an open tender but are  
"console ready" and easily converted.



Self-draining bow locker and seat  
( Deluxe version )



Stainless steel handrail and cup holder  
( Console only )



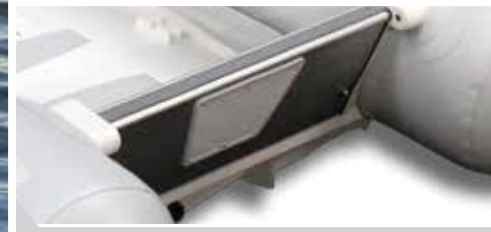
Built in trim tabs promote earlier planing  
and incorporate launching wheels



Large watertight storage compartments  
under the seats ( Console only )



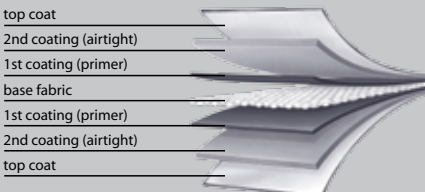
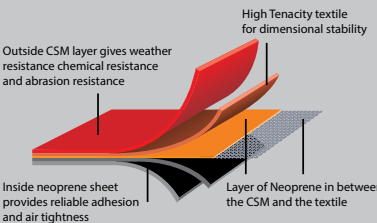
The Deluxe seat is wide, comfortable and has an extra-  
large storage compartment with two cup holders.  
Option of Light or Deluxe seat (Deluxe Shown)



Rigid Aluminum Folding Transom is  
as stiff as a rigid transom but can be  
folded to store the boat flat

## > TUBE CONSTRUCTION

Walker Bay offers you a choice of either name brand Heytex® PVC or ORCA® CSM fabric on all Genesis RIBs. Heytex® PVC is warranted for up to 5 years and is the best PVC fabric available. It is UV tested and offers incredible value. All Heytex® built tubes incorporate 3-layer welded seams for the strongest seam bond possible. ORCA® CSM fabric is also available and is warranted for up to 10 years. This fabric option is best suited to tropical climates where UV exposure is very high or for avid users who want the optimum in quality and peace of mind.







## GENESIS CONSOLE RIB

The feature loaded Genesis Console RIB combines the award winning DuraLITE™ Hull with a fully integrated injection molded center console. Together they create the ultimate small RIB boasting ample storage space, superior comfort and exceptional performance.

**The Genesis console is also incredibly light, with a rigged wet weight with 20hp motor is only 375lbs, with 30hp, 420lbs.**

# G2

**EXPERIENCE THE GENESIS DIFFERENCE  
AT A WALKER BAY DEALER NEAR YOU**



## GENESIS DELUXE RIB

The Genesis Deluxe RIB sets a new standard in small boat design. The deluxe has more storage including a bow locker and large storage hatch in the seat and two large cup holders. With unmatched motoring performance, interior seating, and cockpit space the Genesis Deluxe RIB offers more than any other boat in its class.

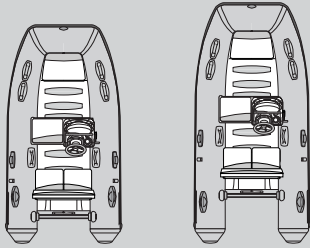
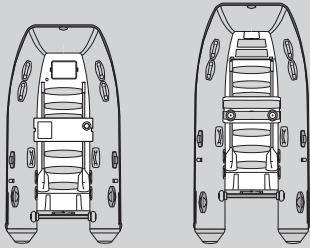
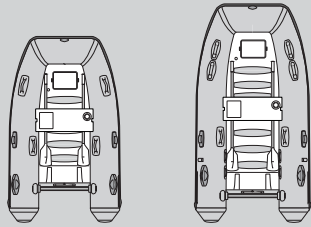


## GENESIS LIGHT RIB

Comfort and practicality all in one package. For those most concerned with weight and portability, our lightest hull RIB performs just like the deluxe but is easier to carry. Quick to plane, superdurable and easy to store, the Genesis Light also comes with a cup holder and a small storage compartment in the seat for valuables. A smart choice for those who just need the basics.





	GENESIS CONSOLE RIB		GENESIS DELUXE RIB		GENESIS LIGHT RIB	
						
DESCRIPTION	CONSOLE 310 DX	CONSOLE 340 DX	310 DX	340 DX	270 LX	310 LX
<b>DIMENSIONS</b>						
Overall Length (cm / ft)	310 cm / 10'2"	340 cm / 11'2"	310 cm / 10'2"	340 cm / 11'2"	270 cm / 8'10"	310 cm / 10'2"
Beam (cm / ft)	165 cm / 65"	165 cm / 65"	165 cm / 65"	165 cm / 65"	162 cm / 64"	165 cm / 65"
Inside Beam (cm / ft)	76 cm / 30"	76 cm / 30"	76 cm / 30"	76 cm / 30"	76 cm / 30"	76 cm / 30"
Tube Diameter (cm / ft)	43 cm / 17"	45 cm / 17.5"	43 cm / 17"	45 cm / 17.5"	43 cm / 17"	43 cm / 17"
Total Weight (kg / lbs)	101 / 221	103 / 226	61 / 135	62 / 137	50 / 110	57 / 126
Airtight Compartments	3	3	3	3	3	3
Tube Material	Heytex PVC or ORCA CSM	Heytex PVC or ORCA CSM	Heytex PVC or ORCA CSM	Heytex PVC or ORCA CSM	Heytex PVC or ORCA CSM	Heytex PVC or ORCA CSM
<b>CAPACITY</b>						
Passengers	4	5	4	5	3	4
Max Payload (kg / lbs)	575 / 1264	605 / 1331	620 / 1364	640 / 1408	520 / 1144	620 / 1364
<b>OUTBOARD DATA</b>						
Shaft Length	Short	Short	Short	Short	Short	Short
Min. Power	15	15	10	15	10	10
Max. Power	20	30	15	25	10	15
Max. Speed (Knots)	24KT	28KT	22KT	25KT	19KT	22KT
Max. Motor Wt. (kg / lbs)	59 / 130	80 / 175	55 / 120	73 / 160	55 / 120	55 / 120

All Dimensions & Weights indicated have a tolerance of plus or minus 3% and 5% respectively. Weights as measured for lifting purposes do not include removable seat and oars. Oars weight is 3.3lbs / 1.5kg and seat weight is 7.5lbs/3.4kg respectively. Published weights are for PVC model.



**WALKER BAY**

info@walkerbay.com  
walkerbay.com

walkerbay.com is the place for all your questions and communication on Walker Bay products. There is extensive product information, videos, and owner downloads available. Go to walkerbay.com for more information.