



WALKER BAY

ASSEMBLING INSTRUCTIONS

Genesis Console 310 & 340



For Customer Service or Technical Support visit www.walkerbay.com

INTRODUCTION

The Genesis Center Console package is a modular retrofit system which allows you to upgrade the 310 and 340 model Genesis RIB's as either a Deluxe Genesis Console RIB or as a scaled down Light Genesis Console runabout/tender. This package provides the first fully integrated injection molded center console to the market, and is designed specifically for Walker Bay's award winning Genesis line.

Space and storage were two of the primary attributes Walker Bay took into account when designing these packages. The console's ergonomic design provides the driver with more foot room, creating a more comfortable riding position, and the integrated seat storage compartments make efficient use of space. The center console has two compartments, one designed to take a battery and the other for gear. The console itself is sold as a Basic Console Kit.

In addition to the standard Basic Console Kit (P/N 925100), two deluxe kits can be purchased which add additional comfort, storage and lighting:

The Deluxe Tender Kit (P/N: 925140) comes with a deluxe driving seat and several cushions for added comfort. The seat has an integrated, hinged backrest that lifts to reveal two large water resistant storage compartments underneath, one of which has a secure ventilated area designed to hold a 3-gallon gas tank in place.

The Electrical & Lighting Kit (P/N: 925180) provides dual color directional lights and a customer wiring harness which attaches to the center console itself. This kit also comes equipped with a 360⁰ rear light which attaches to the back of the rear seat frame.

The Basic Console Kit is meant to be installed with the Genesis 310FTL, whereas the Basic Console Kit, Deluxe Tender Kit and Electrical Kit can be purchased as a package, with either the Genesis 310FTD or Genesis 340FTD. These three kits, when combined with Walker Bay's larger Deluxe boats, create a truly deluxe package at a very competitive price.

Please visit www.walkerbay.com if you need more information of the Genesis Console boats, or call 1 - 888 - 449 2553.

Assembling Instruction
for Genesis Console 310 & 340
Rev Date: TH.05.26.08
P/N 925225

CONTENTS

Introduction	2
Boating Safety Signs & Symbols	4
Completed Boats	5
925100 Basic Console Kit	6 - 12
Steering Wheel	7
Console and Seat	7 - 12
925180 Electrial/Lighting Kit	13
Side Lights	14
Switch Panel	15
Pole Light	16
925140 Deluxe Tender Kit	17

BOATING SAFETY SIGNS AND SYMBOLS



This is the safety alert symbol. It is used to alert you to potential personal injury hazards. Obey all safety messages that follow this symbol to avoid possible injury or death.



DANGER

Indicates an imminently hazardous situation which, if not avoided, will result in death or serious injury or substantial property damage.



WARNING

Indicates an imminently hazardous situation which, if not avoided, could result in death or serious injury or property damage.



CAUTION

Indicates an imminently hazardous situation which, if not avoided, may result in property damage.

CAUTION

Used without the safety alert symbol indicates a potentially hazardous situation, which, if not avoided, may result in property damage.

NOTICE

Indicates installation, operation or maintenance information which is important but not hazard related.

Completed Boats:

Front View:



Left View:



Right View:

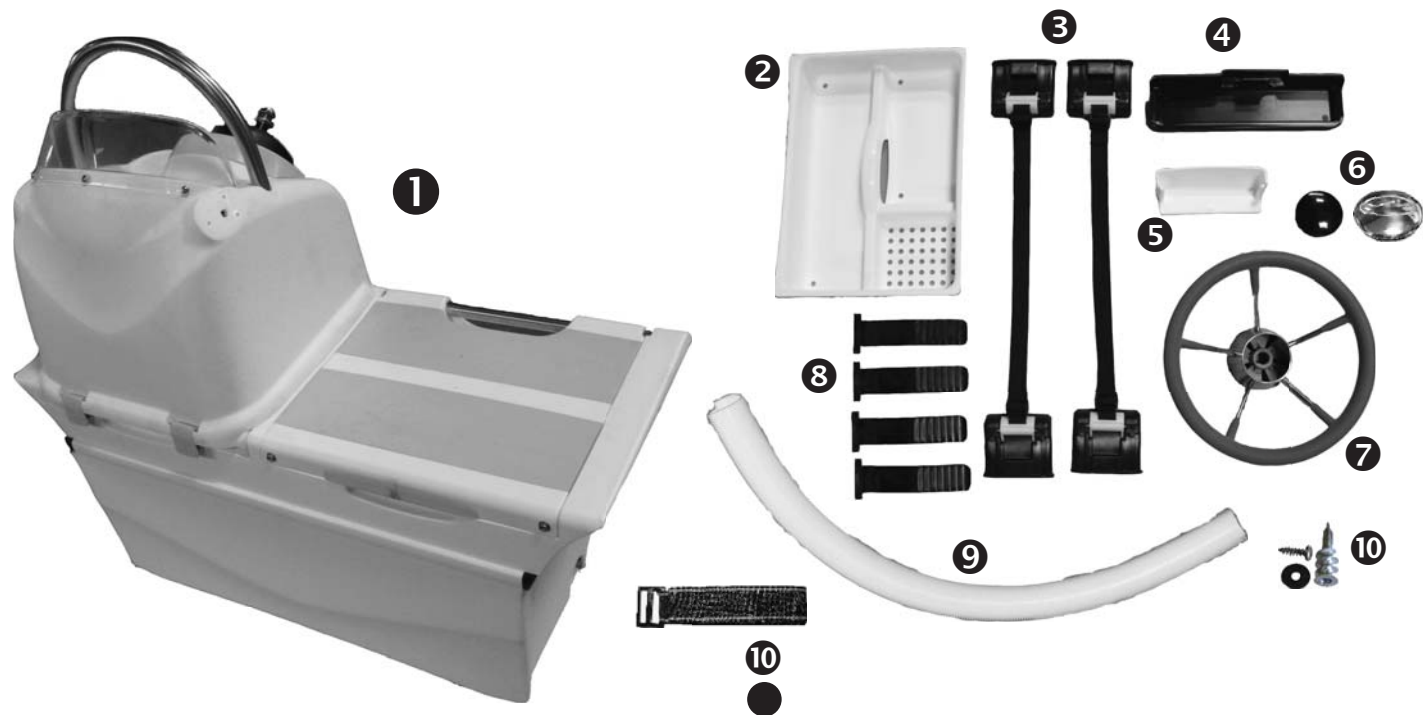


925100 Basic Console Kit (Remote Steering Kit)

The followings will cover the installation of the Console Kit.

The Console Kit have the following parts:

- A. The Console and Seat Assembly
- B. Components



- | | |
|---|--|
| ❶ Console and Seat Assembly with Steering Cable | ❸ Ratchet Seat Clip Adapters with release straps |
| ❷ Deluxe Seat Tray (white) | ❹ Cable Sheathing |
| ❺ Ratchet Seat Clips | ❺ Accessory Holder (white) |
| ❻ Steering Wheel Cap | ❻ Seat Box lock-down screws |
| ❼ Steering Wheel | |

CAUTION

- Before proceeding to install the console, read this manual carefully, and check whether you have received all components as shown in the pictures above.
- Do not lock the seat into the ratcheting adapters until you are completely satisfied with your installations of all the cables (steering, electrical, fuel, etc.) and have tested the functioning of them. Also cover the cables with the white cable sheathing provided.

Pushing and locking down the seats should be the final step of assembling.

- If you have any questions during assembling, call Walker Bay at 1-888-44 WALKER.

STEP ONE: INSTALLING THE STEERING WHEEL



1. Remove the nut and washer from the steering shaft, slide the steering wheel down on the shaft, put the washer and nut back and tighten with a 3/4" deep-well socket wrench.



2. Install the steering wheel cap by firstly loosening the small bolt on the side of the steering wheel housing with a small flat screwdriver, insert the cap into place, and re-tighten the bolt.

STEP TWO: INSTALLING THE CONSOLE & SEAT ASSEMBLY



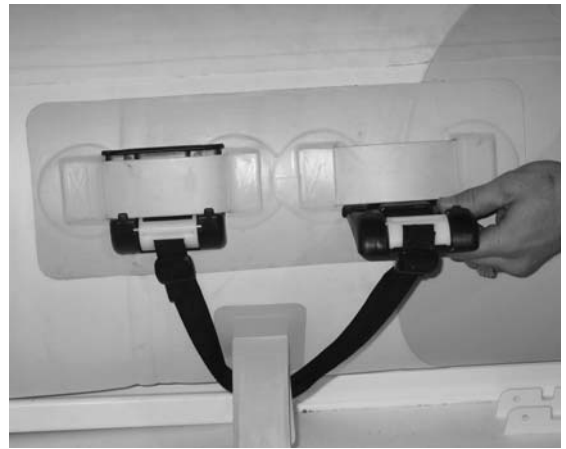
1. Inflate the tubes of the boat to full air pressure. Prepare a bottle of clear soap water (note: do not use colored soap).



2. Spray soap water into the front seat patches where the console will be mounted. Spray all 4 patches.



3. Insert the ratchet clip adapter into the seat patches from below. The pull strap should face down and the opening of the adapter should face up.



4. Push the adapter all the way up until it sits firmly inside the seat patch. Repeat this with the other adapter, also with the strap facing down.



5. Install the other pair of adapters on the other side of the tube in the same way.



6. Open the lid of the console and the seat, and find the slots on the edges to insert the ratchet clips.



7. Note that the ratchet clips should be inserted that they align with the curve of the inflated tubes. Pull down until they lock.

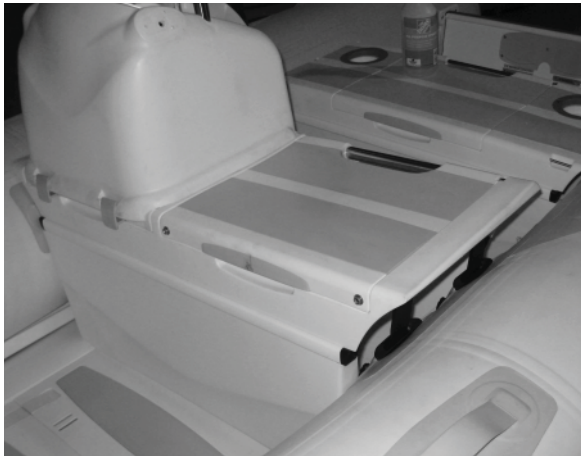


8. Position the console & seat above the opening of the adapters, and guide the ratchet clips into the adapter.



CAUTION

- Do not lock down the console until you are satisfied with the set-up of the entire boat. Complete the installation of all other controls, gauges, cables and wires first.
- The seat ratcheting system is designed to hold the seat firmly in place. It could be difficult to remove it from the tube once locked down.



9. Do not push down on one side first. Work on both sides until all 4 ratchet clips are fully inserted and lock into place.



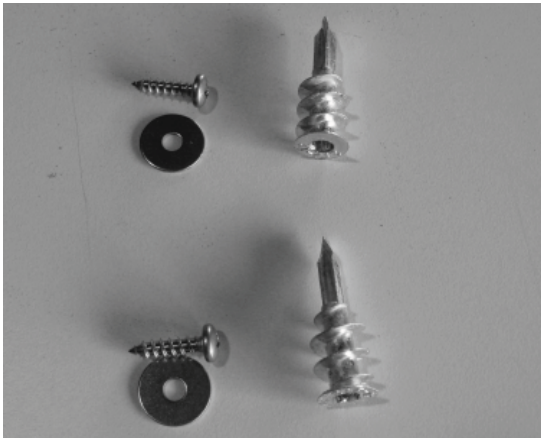
10. Open the console and drop the black tray in. The tray is to separate the battery compartment from the lower seat box.



11. Slide the Console Accessory Holder down along the rib on the opening.



12. It will fit firmly in place. This tray is for small accessories such as sun glasses.



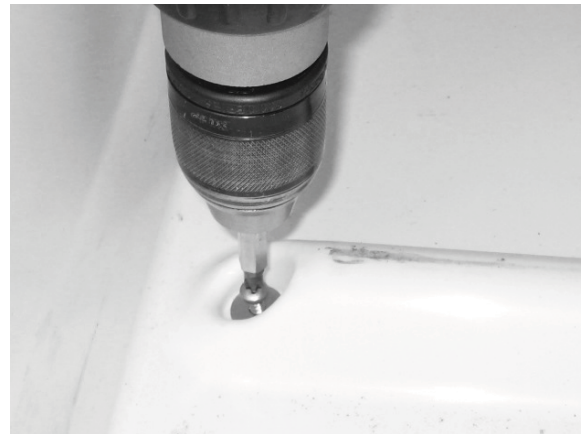
13. The next step is to further secure the seat box to the floor. Look for the 2 sets of drywall screws, small screws and washers in the box.



14. Open the seat lid, and look for the two rounded spots at the center of the bottom of the seat box. They are the positions for the screws.



15. Use a #2 Philips screwdriver to drill the dry-wall screw down into the hole. Drill slowly until the screw stops.



16. Place the washer on top of the drywall screw head, and drill the smaller screw right into the head of the drywall screw. Drill slowly until it stops.



WARNING

Use the 2 pre-set positions for drilling only.
Do not drill on the other places on the floor or near the tube, or you could drill a hole through the hull and cause permanent damage and cause the boat to leak.



17. The completed lock-down screws. Do exactly the same with another set of screws at the other spot.



18. If you are not installing the Deluxe Seat & Cushion Kit, you can install the original Genesis seat on the 2nd set of seat patches.



19. Lift the seat lid and drop in the seat tray. Now the installation of Console is complete.



20. Battery is to be placed inside the console, under the steering wheel helm. Use the Battery Tie-down Brackets and straps provided to secure the battery firmly in place.

NOTE

1. Battery:

Please use a starting battery which is no taller than 8 inches, due to the limited space inside the console. The following battery has been tested by us and has been working well with the Honda 30 hp motor we installed.

Optima Batteries - Blue Top for marine use

P/N: 34M (8006-006) - unboxed

P/N: 34M (9006-006) - boxed

Specs: BlueTop®; Marine Battery; Group 34M; Cold Crank Amps 800; Crank Amps 1000;

Reserve Capacity 110; Ampere Hour 50; Top Terminal.

Dimensions: L - 10 in.; W - 6 7/8 in.; H - 7 13/16 in.

NOTE

2. Steering Cable:

The steering cable cannot be bent at a sharp angle, or steering performance will be affected, or the cable could come loose during operation.

We suggest that the black tray between the console and under seat box to be removed, and the steering cable to be guided down towards the bottom of the seat box. And then it could come out of the seat box from the lower starboard side via the round opening, and along below the tube all the way to the motor at the rear.

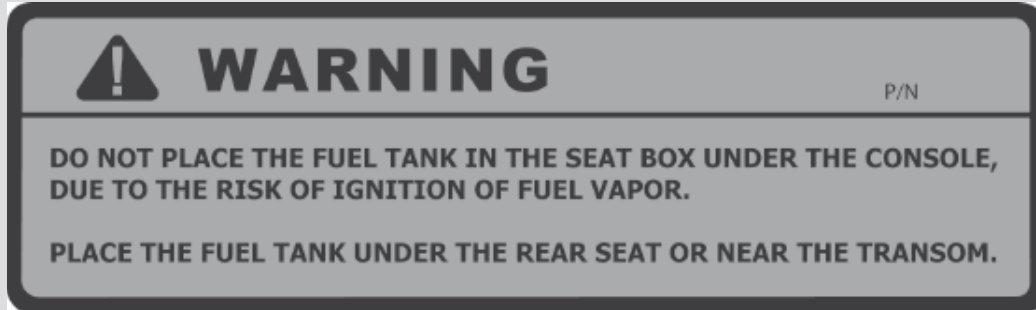
3. Fuel Tank:

Since the tray in the battery compartment is to be removed because of the steering cable, you **MUST NOT place the fuel tank inside the lower seat box under the console.** According to marine safety regulations, the battery and the fuel tank must be separated.

Walker Bay recommends that the fuel tank to be placed under the rear seat, if you install the Genesis seat there.

If you are going to install the Deluxe Tender Kit, you will have a similar seat box under the rear seat, in which the fuel tank can also be placed.

There is a warning label in the battery compartment showing such a warning (see below). If this label is missing or worn out, you could order a replacement by calling us at 1-888-44 WALKER. The part number is: _____.



4. Installing Throttle Control and Outboard Motor:

For Outboard Motor installation instructions, please see owner's manual of the Genesis boats by Walker Bay Boats.

For throttle controls, there are 2 types that can be installed: flush mount, or side mount. Please follow the installation instructions that come with the throttle control unit that you are going to use.

Note: If you are installing side lights, please make sure that you position the throttle control far back enough from the starboard light so the handle, when in full throttle position, will not interfere with the light.