



**A leader in the  
Marine industry  
for more than  
50 years.**







# Thomas G. Faria Corporation

**World Class Instrumentation**

The Thomas G. Faria Corporation has been manufacturing gauges in Uncasville, CT for more than 50 years (Established in 1956) and has grown from a company that primarily produced tachometers for the marine and auto industries to one that today offers a multitude of engine monitoring instrumentation to a wide range of markets.

In the early 1960's Faria started producing tachometers with the Ford Motor Company. The first application was for the Comet Rally Pack and the Falcon Sprint. Faria later designed and developed tachometers for the famed Mustang and Shelby Cobra.

We've also supplied Volkswagen of America, Chrysler Corp. and yes we even furnished assemblies to the forgotten American Motors Corporation. During this period Faria was producing more than a million tachometers per year.

By the Late 1970's Faria's customer base expanded to include such equipment manufactures as Caterpillar, Allis Chalmers, International Harvester, Bobcat, etc., etc. Stationary power equipment and Gen-set manufacturers all who found Faria Instruments to be rugged enough to withstand the most harsh environments, and at competitive prices.

Faria became a major supplier of instrumentation to the US Military in the 1980's and is one of only a few companies that has received the ABVM Gold supplier award for on time delivery and quality for seven consecutive years. Of course Quality has always been our first concern.

In fact, in 1997 Faria became an ISO9001 registered company. An achievement we are very proud of. Today we maintain the same commitment to Quality and continue to meet the requirements to be **ISO9001:2008 Registered.**



In the 1990's Faria developed the first programmable electronic speedometer for motorcycles, ATV's and snowmobiles and was a major supplier to Harley Davidson and Polaris. During this period Faria also became the leading supplier of instruments to the recreational boat market.

Today our work force is more than 350 strong. We have made the transition from an electric and mechanical gauge manufacturer to an electronics hardware and software design company with in-house pick and place assembly lines for SMT circuitry.

We are better known for our brand names Faria Marine Instruments, Faria Performance Instruments. Through these business units the Thomas G. Faria Corporation sells to a variety of markets including Marine, Recreational Vehicles both in the US and abroad.

We build some of the most sophisticated vehicle information and instrumentation systems in the industry, and, a range of products that are rugged enough to survive on a Humvee, or with enough styling to compliment any recreational vehicle.

We are dedicated to supplying our customers with the highest quality instrumentation & telematic systems achievable at competitive prices. On the road, in the water or wherever life takes you, Faria® Instruments are performance proven under the most demanding conditions. Major manufacturers worldwide install Faria® Instruments as their original equipment.



Thomas G. Faria Corporation  
Uncasville, CT

**Automotive  
Military  
Industrial  
Commercial  
Recreational  
Performance  
Marine**

**Rugged • Reliable • Innovative**



## Phone Directory

Phone: (860) 848-9271  
Fax: (860) 848-2704



**Dave Blackburn**  
President  
ext. 1221



**Jason Blackburn**  
V.P. of Sales and Marketing  
jasonb@faria-instruments.com  
ext. 1212

### *Marine Sales*



**Frank Ahlbin**  
Marine Sales Manager  
franka@faria-instruments.com  
ext. 1303



**Bob Chayrigues**  
Aftermarket & Export Sales  
bobc@faria-instruments.com  
ext. 1262



**John Alexopoulos**  
Marine Sales Representative  
Maestro Sales  
johna@faria-instruments.com  
ext. 1301



**Martin Crabb**  
Marine Sales Representative  
martinc@faria-instruments.com  
ext. 1218

### *Customer Service & Warranty*

**Ted Genard** ext. 1229  
Customer Service Manager  
faria@faria-instruments.com  
Customer Service & Warranty: **800-473-2742**

### *Sales Support*

**Monique Holdridge** ext. 1221  
Administrative Assistant  
moniqueh@faria-instruments.com

### *Accounting*

**Todd Shorts** ext. 1223  
Controller  
todd@faria-instruments.com

### *Order Processing*

**Miriam Wilson** ext. 1267  
Order Processing

**Patty Parker** ext. 1208  
FMI Order Processing Supervisor

### *Marketing & Advertising*

**Thomas Wedegis** ext. 1285  
Marketing Coordinator  
thomasw@faria-instruments.com

[www.faria-instruments.com](http://www.faria-instruments.com)

# GPS Speedometer

## New for 2010

**Faria**® MARINE INSTRUMENTS

**With Three different models available, there is a GPS Speedometer just right for your needs.**



### **GPS Speedometer**

New to the marketplace, Faria introduces a new GPS speedometer for the entry level user. This new instrument is a drop in replacement for your current speedometer to match your existing instrument dash. GPS Speed displays via a NMEA 0183 or NMEA 2000 GPS antenna. Use the existing GPS antenna on your vessel or install a Faria supplied antenna. Speed data is shown by an analog pointer. This pointer is driven by a stepper motor for increased accuracy and minimized pointer bounce during vessel operation.



### **GPS Speedometer with Compass (COG)**

All of the accuracy and features of the GPS Speedometer. Get an upgrade which adds a black & grey LCD to display COG (compass heading over ground).




### **Advanced GPS Speedometer with Depth**

The Advanced GPS Speedometer adds a 3 button operating system and a large LCD to display GPS and Depth information. The LCD illuminates in vibrant colors as standard, RED, YELLOW, GREEN or BLUE and can be custom-made with additional colors.

The LCD displays the follow data:

- two line data display (line 1 with GPS data, line 2 depth)
- GPS data includes - digital GPS speed, longitude, latitude, clock and compass
- Depth Sounder - features include, using an analog depth sounder transducer to provide depth in feet, meters or fathoms - and user settable shallow and deep alarms.
- Buttons allow the consumer to easily toggle between functions and to set alarms.

### **Benefits**

- Available in 4" and 5" instrument sizes.
- Deutsch or Packard connectorized cases.
- Comes standard with fog resistant lens.
- Can be used with either NMEA 0183 or NMEA 2000 GPS antenna. 
- Fully customizable dials and cosmetics, including perimeter lighted and back lit dial designs.
- Stepper motor driven pointer for improved response and elimination of pointer bounce during operation.
- Multiple speed ranges available. Speed can be displayed in MPH or Knots.
- GPS Speedometer with Depth utilizes an analog depth transducer.
- More reliable speed than pitot tube or paddle wheel speedometers while at slow speeds.

**Available in all Faria standard styles. A trouble free replacement for your existing Speedometer.**



All Faria Marine Instruments comes with a Limited Lifetime Warranty see [www.faria-instruments.com](http://www.faria-instruments.com) for details.

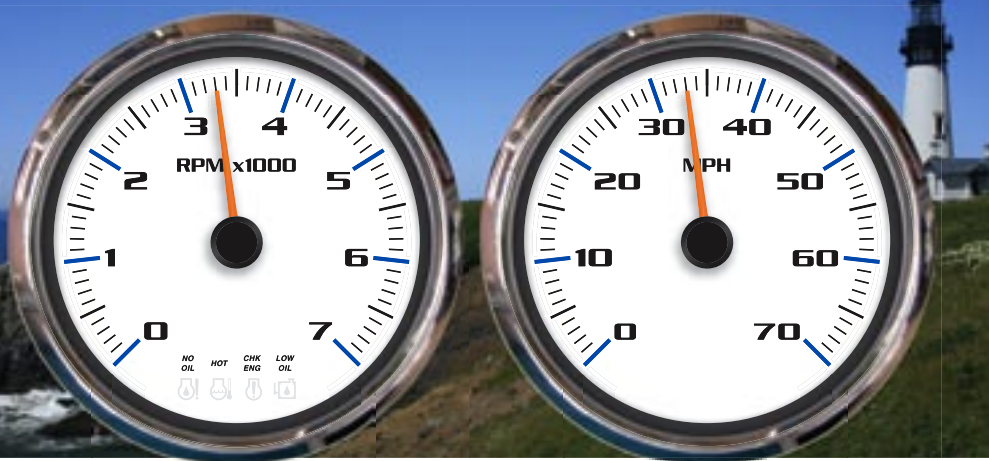


P.O. Box 983 • Uncasville, CT 06382 Tel: 860-848-9271 Fax: 860-848-2704

fm-001-0065 rev a 9/2010



# MG1000



Introducing the stepping stone of digital instrumentation, the MG1000 series. This innovative digital gauge system requires no LCD's, no system initialization, no menu setups and no user manual interaction for use - ever! Just install and go boating!

The MG1000 gauge system displays engine ECU data and alarms. Installation is simplified by reducing wiring and setup time. Our instruments communicate with the engine ECU for the most accurate information and error codes.

This system is the lowest cost, most user-friendly digital product in the market for customers installing digital technology. Multiple analog inputs and warning lights reduce cost while still providing the customer with everything they need.

Upgrade to the MG3000 system for an even wider variety of options and features. The Faria product suite offers a multitude of accessory gauges available to connect to the MG1000 system including a 2" fuel flow gauge to show fuel economy. The combinations are limitless!!

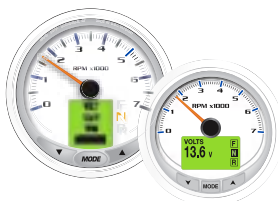
## Features

- Utilizes both analog and digital inputs to reduce system cost
- Easily connects to all engine bus protocols
- All Tachometers are GPS enabled to display GPS Speed
- Audible and visual alarms
- 10 levels of lighting adjustments
- Stepper motor driven pointers
- Pitot port for Mechanical speed - Analog
- Paddle wheel input - Analog
- Multiple 5"/4"/2" instrument and dash set options in Faria Standard series
- Custom cosmetic options upon request
- Deutsch or Packard marine connectors

This system offers easy installation via a single wire connection and waterproof connectors from engine ECU to instruments.

- LED lighting and RGB LEDs for multi-color light options
- Analog Depth, Air Temperature, Paddle wheel Pitot Speed, Trim, Fuel Level and Water Temperature inputs

Compatible with MG3000 systems.



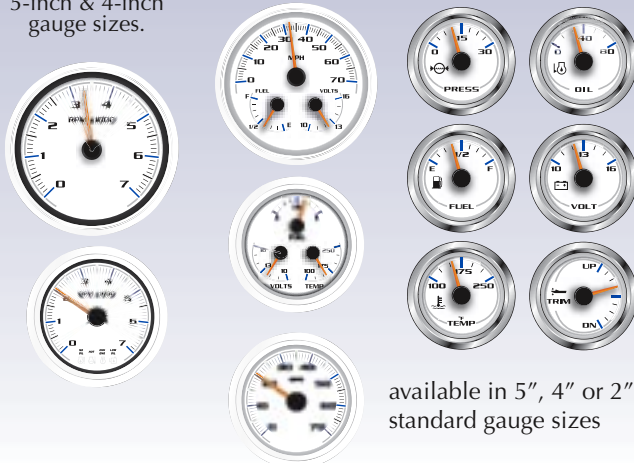
**Faria**® MARINE INSTRUMENTS

## Benefits

- Dead - fronted Warning lights and Alarms.
- Can be directly connected to NMEA2000 systems.
- NMEA0183 GPS input for GPS Speed. Compatible with NMEA2000.
- A single Tachometer can monitor up to 4 fuel tanks (2 per engine).
- Use to monitor up to 2 engines.
- Cost Saving features
  - Analog Paddle Wheel
  - Analog Depth inputs
  - Analog Fuel Level
  - Analog Speed input (Pitot port)
  - Analog Water Pressure input (Pressure port)
- Uses a single backbone for dual engine installations.
- Integrates directly to MG3000 systems.

Available in 5-inch & 4-inch gauge sizes.

Multiple discreet gauge combinations available



available in 5", 4" or 2" standard gauge sizes

Specifically designed to work with the leading engine manufactures. The MG1000 offer the boat manufacturer and enthusiast the most cost effective options for engine monitoring.

MERCUY Engines VOLVO PENTA BOMBARDIER HONDA MARINE YAMAHA SUZUKI

All Faria Marine Instruments comes with a Limited Lifetime Warranty see [www.faria-instruments.com](http://www.faria-instruments.com) for details.



P.O. Box 983 • Uncasville, CT 06382 Tel: 860-848-9271 Fax: 860-848-2704

fm-001-0020 rev f 9/2010

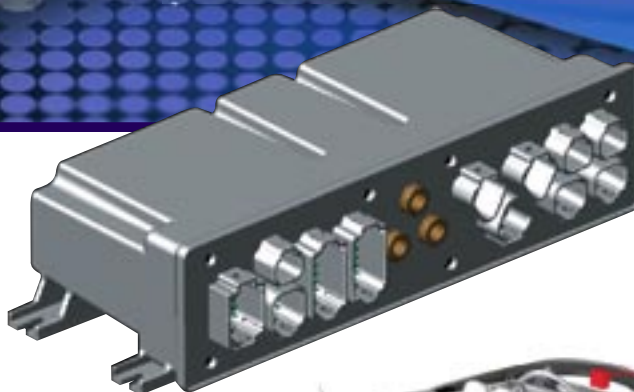
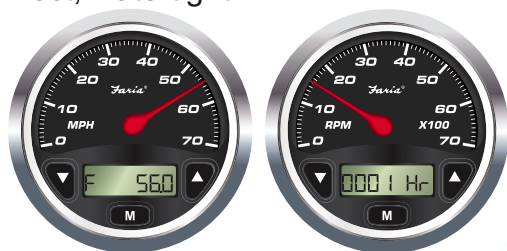
# Helmsman™

## Digital Serial Bus

from Faria Marine Instruments



- Reduced Harness weight.
- Constant monitoring of engine and vehicle functions.
- Single wire connections from the Gateway.
- Intelligent “Smart” stepper motor instruments, connected daisy chain with quick connect, watertight connectors.



## Features

### Messages in Multiple Languages

Constantly monitors over 40 functions and provides a visual display in text format of SystemCheck codes with diagnostic messages in multiple languages.

### Easy Installation

Single wire connection from SystemCheck Gateway Box to Instrument Panel minimizing size, weight and complexity of electrical harness.

### Waterproof Connections

Intelligent stepper motor instruments for increased reliability and accuracy. Instruments are connected by a daisy chain harness with quick connect waterproof connectors.

### Easy to Read Digital Displays

Provides a digital readout of speed, depth, clock, temperatures, hour meter, voltmeter.

### Easy to use Fuel Management

Displays fuel management information including instantaneous fuel flow and total fuel consumed.

### Multiple Interfaces

Operates with Analog, Digital and Mechanical interfaces.

## Continuously Monitors these functions

### Bus Interface

Diagnostic Bus  
SystemCheck® Bus  
J1939 CAN/NEMA CAN

### Transducer Interface

Depth  
Speed  
Temperature  
Fuel Flow

### Diagnostic Interface

Diagnostic Port  
Field Upgrade Port

### Pressure Interface

Speed  
Water Pressure

### Analog Interface

Trim  
Fuel  
Oil Pressure

### Switch Interface

7 Switched inputs  
3 Pulse/Switched inputs

## Specifications

### Operating Voltage

8 VDC to 16.5 VDC.

### Operating Temperature

0°C to 50°C (32°F to 122°F)

All Faria Marine Instruments comes with a Limited Lifetime Warranty see [www.faria-instruments.com](http://www.faria-instruments.com) for details.



P.O. Box 983 • Uncasville, CT 06382 Tel: 860-848-9271 Fax: 860-848-2704

fm-001-0027 rev a 5/2008



# MG2000



The Faria MG2000™ system represents a breakthrough in electronic marine engine monitoring instrumentation. The MG2000's are multifunction gauges with a stepper motor driven analog display for Tach and Speed and a high resolution multi-line display providing access to all of the engine information right at you fingertips.

The MG2000™ system connects to all marine engine communications protocols - SmartCraft Networked, NMEA2000, J1939, J-1708 and K-line. This system offers easy installation via single wire connection from engine ECU to instruments and waterproof connectors.

Equipped with a Faria GPS100 or any NMEA-0183 Antenna the MG2000 displays GPS Speed, Heading and current position.

## Features

- Utilizes both analog and digital inputs to reduce system cost
- Easily connects to all engine bus protocols
- All Tachometers are GPS enabled to display GPS Speed, COG, Heading, and Clock

Equipped with a Faria GPS100 or a NMEA0183, the MG2000 LCD displays GPS Speed, Heading, current position and clock in the LCD.

- Audible and visual alarms
- Stepper motor driven pointers
- User definable screens and alarms
- Multiple 5"/4"/2" instrument and dash set options in Faria Standard series
- Custom cosmetic options upon request
- Deutsch or Packard marine connectors utilized

This system offers easy installation via a single wire connection and waterproof connectors from engine ECU to instruments.

- Multiple functions displayed in LCD

### MG2000™ Tachometer

- RPM
- Oil Pressure (engine dependent)
- Oil Temperature
- Engine Hours Run Only
- System Voltage
- Trim
- Engine diagnostic
- Depth (if on Bus)
- and more.

- Fuel Management system
  - Fuel Pressure
  - Fuel Consumption Rate
  - Fuel Remaining
  - Estimated range to empty
  - Fuel used since last reset
  - Average GPH
  - Instantaneous Fuel Flow

### MG2000™ Speedometer:

- Paddle Wheel Speed
- Pitot Tube Speed
- Barometer (from engine ECU via Faria Bus)
- Trip Log
- Air and Water Temperatures
- Fuel Level
- and more.

- GPS information (External GPS required via NMEA 0183 bus.)
  - Course over ground
  - GPS Speed
  - Clock
  - Latitude
  - Longitude
  - Heading

**Faria**® MARINE INSTRUMENTS

## Benefits

- User definable screens & Alarms.
- Can be directly connected to any protocol.
- NMEA0183 input for Lat/Long, Heading, Clock, GOG and GPS Speed.
- Calibration of Fuel Level, Trim, and Speed included.
- Superior Sunlight readable display.
- Easy installation
- Stepper motor gauges (for greater accuracy)
- GPS speed
- Fog resistant lenses.
- Connect to the Faria Bus for even more display options.

Available in 5-inch & 4-inch gauge sizes.

Multiple discreet gauge combinations available



available in 5", 4" or 2" standard gauge sizes

Specifically designed to work with the leading engine manufactures. The MG2000 offer the boat manufacturer and enthusiast the most cost effective options for engine monitoring.

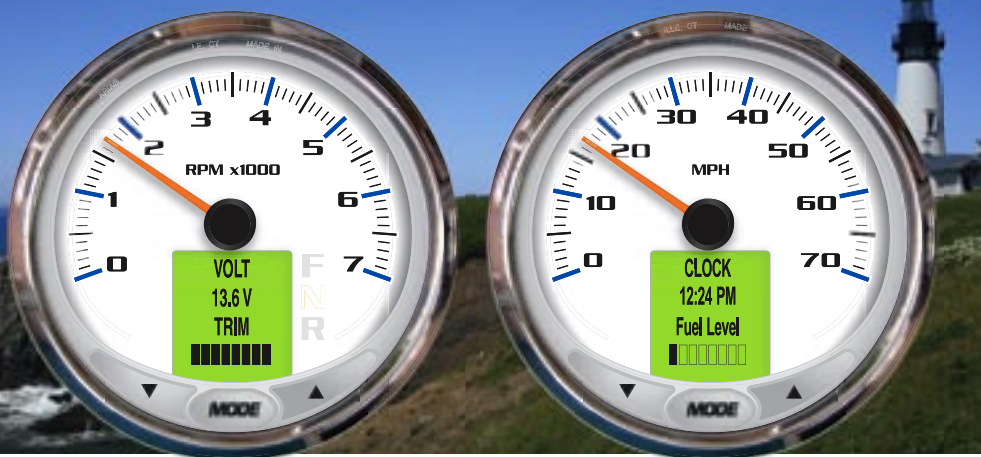


All Faria Marine Instruments comes with a Limited Lifetime Warranty see [www.faria-instruments.com](http://www.faria-instruments.com) for details.



# MG3000

**Faria**® MARINE INSTRUMENTS



Introducing the newest addition to the digital product line from Faria Marine Instruments. The MG3000 digital instrumentation system may be the most feature-rich, most intuitive engine monitoring solution ever released to the marine industry.

Features include larger lighted buttons with tactile feedback, LED back lighted dial, fog-resistant glass or polycarbonate lens and plug and play connectorized cases. The new daylight readable green LCD is visible even in direct sunlight. The intuitive design is so user-friendly that the customer will never need a manual to operate the product. The ability to interface to analog signals reduces installed costs significantly.

The instrument combinations available in the MG3000 product suite are virtually limitless. Connect more than 25 discreet instruments to the tachometer or use the tachometer alone. The choice is yours!

For more information on the Faria MG3000 or other Faria products, please contact Faria sales at (860) 848-9271 ext 1303.

## Features

- Utilizes both analog and digital inputs to reduce system cost
- Easily connects to all engine bus protocols
- All Tachometers are GPS enabled to display GPS Speed, COG, Heading, and Clock

Equipped with a Faria GPS100 or a NMEA0183 or NMEA2000 antenna, the MG3000 LCD displays GPS Speed, Heading, current position and clock in the LCD.

- Audible and visual alarms
- Stepper motor driven pointers
- User definable screens and alarms
- Multiple 5"/4"/2" instrument and dash set options in Faria Standard series
- Custom cosmetic options upon request
- Deutsch or Packard marine connectors utilized

This system offers easy installation via a single wire connection and waterproof connectors from engine ECU to instruments.

- LED lighting and RGB LEDs for multi-color light options
- One button unit conversions
- Engine Diagnostic Error codes stored in dedicated screen
- Analog Depth, Air Temperature, Paddle wheel Pitot Speed, Trim, Fuel Level and Water Pressure inputs
- LCD flashes Red for engine critical Alarms, Yellow for cautionary Alarms
- Throttle Position displayed F•N•R on dia with some engines!

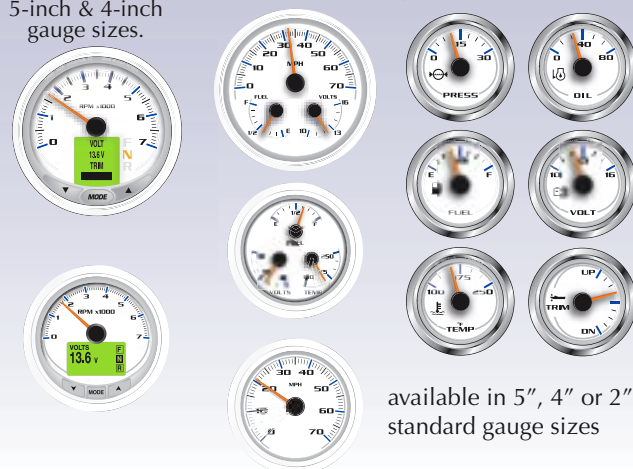


## Benefits

- Manuals and LCD data are available in 5 languages.
- Seasonal Data and Winterize modes.
- User definable screens & Alarms.
- Pop-Up screens for quick information display and warnings.
- Alarm codes with suggested actions.
- Data log for fault codes.
- Can be directly connected to any protocol.
- NMEA0183 or NMEA2000 GPS input for Lat/Long, Heading, Clock, GOG and GPS Speed.
- A single Tachometer can monitor up to 5 fuel tanks.
- System compatible with up to 5 engines.
- Calibration of Fuel Level, Trim, and Speed included.
- Initialization mode to assist in gauge set-up.
- Superior Sunlight readable display.

Available in 5-inch & 4-inch gauge sizes.

Multiple discreet gauge combinations available



available in 5", 4" or 2" standard gauge sizes

Specifically designed to work with the leading engine manufactures. The MG3000 offer the boat manufacturer and enthusiast the most cost effective options for engine monitoring.



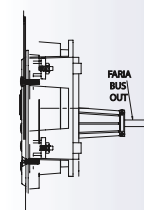
All Faria Marine Instruments comes with a Limited Lifetime Warranty see [www.faria-instruments.com](http://www.faria-instruments.com) for details.



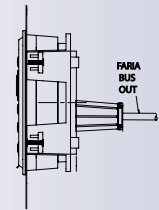


**Antares™****Faria® MARINE INSTRUMENTS****Benefits**

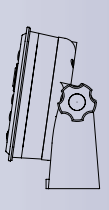
- 3.8" TFT Sun-Light viewable display
- 7 gauge display screens
- User Settable Screens
- Rugged construction
- 3 mounting methods - Gimbal, Flush-mount and Standard Panel Mount



Flush Mount



Standard Panel Mount



Gimbal Mount

- NMEA0183 GPS compatible
- Multi-color display
- Displays engine warnings and stores engine diagnostics
- Fuel Management
- Partnered with Jensen® for remote radio control

The Antares™ represents the next stage in the evolution of multi-function gauges.

The user settable screens gives the operator the choice of Analog and Digital displays of the information, side by side on a easy to read color LCD. Each section of the screen can be changed giving the user the ultimate in customized gauges.

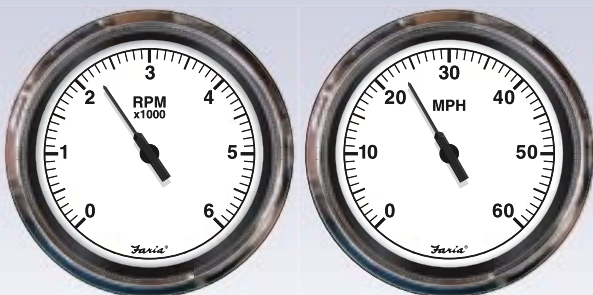
Ideal for dashes where space savings is important. Ideal for center console boats. The Antares™ provides up to six different functions on one screen. With two different gauge function screens the user can set two different views and switch back and forth between views. Set one view for low speed travel and one for high speed travel.



What ever your need the Antares™ can get the job done. GPS speed and Lat/Long are displayed using an optional GPS connection. Manage up to 3 tanks, manage trip calculations with the on-board Fuel Manager.

New to Faria gauges, the user interface is easy to use and quick to learn. Faria invites you to touch the future and test drive the Antares™ for yourself.

Enhance your dash display. Connects to the Faria Bus. 5-inch Tachometer and Speedometer gauges are available.



Contact Faria Marine Instruments for more information.

**Don't let its compact size fool you...**

**The Antares™ gives all of the information you need in a compact, easy to read design.**

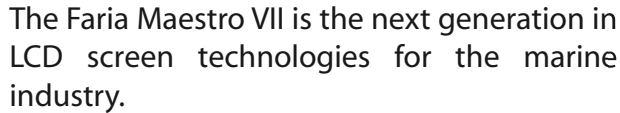
All Faria Marine Instruments comes with a Limited Lifetime Warranty see [www.faria-instruments.com](http://www.faria-instruments.com) for details.



P.O. Box 983 • Uncasville, CT 06382 Tel: 860-848-9271 Fax: 860-848-2704

fm-001-0003 rev h 09/2010

## Multi-function display and control center

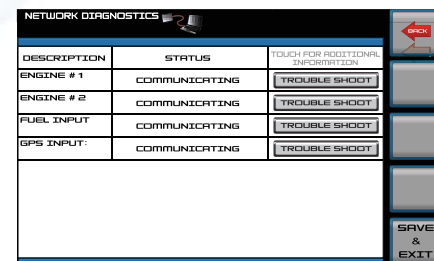


Faria has combined features including engine monitoring, internet connectivity, Zero Off speed control, digital switching, infotainment and navigation into an intuitive, cost-effective and user-friendly device.

The Faria Maestro VII is available in multiple sizes with buttons, touch-screen or a combination of buttons and touch-screen.



**Touch screen** - the Faria Maestro VII is touch screen and combination-touch compatible at additional cost.

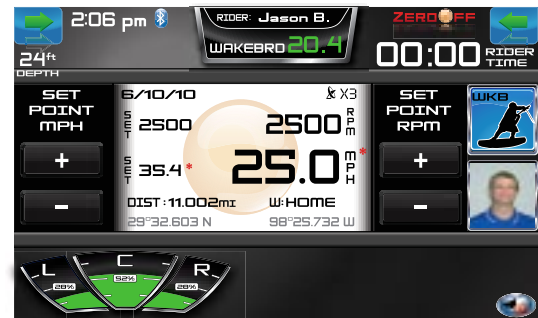


**Engine Monitoring** – for J1939 or NMEA2000 protocol for up to 5 engines.

The GUI is customizable: customers can change size, font, pointer and background graphics. The Faria Maestro VII has dual CAN inputs.



**Input / Output** – to reduce system architecture cost, Faria supports an output to both analog and digital instruments.



**Speed Control** – the Maestro VII includes Zero Off speed control.





## Other Features



**Fuel Level** – the Maestro VII will display multiple fuel levels, is calibrated for non-liner tanks and provides instantaneous fuel flow.

**Low Fuel Level** – Low fuel level warnings will be activated as specified by customer.



**Trip Information** – The Maestro VII displays distance to empty, time to empty and average fuel consumption.



**Depth** – The Maestro VII accepts with CAN data, or, to reduce cost an analog depth signal and bottom contour trending.



**Audio Integration** – The Faria Maestro 7 includes a user-friendly and attractive GUI for controlling any audio input in the industry.



**Camera** – The architecture will support (2) POV video cameras, with a capability to upgrade to (4). Audio integration for iPod and XM / Sirius radio are also included. Video Recording, Display, Playback and Storage are integrated into the Faria Maestro VII.

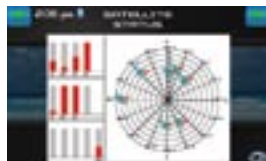


**Digital Switching** – Both Faria (4) 2 AMP and (2) 6 AMP – and DSS digital switching are available.

Includes: Ballast and Trim control.



**Charting** – Both C-Map and Navionics are integrated into the Faria Maestro VII.



**GPS / Direction / Heading** – the Maestro VII will display the heading of the vessel based on the input from the GPS antenna.



**Faria WatchDog integration** – Remotely monitor, track your boat from your boat, home or office. Monitor your boats location with Geofences and near real-time tracking.



**Warnings** – the Maestro VII will, display all CAN and user-defined warnings along with suggested solutions.



**Imperial / Metric** – Data on the Maestro VII may be displayed in metric or imperial values.



**Language Selection** – the Maestro VII displays all required information in English, French, German, Italian and Spanish.

**Modular CPU and Screen** – Flexible design allows connection to commercially available 16:9 widescreen displays at additional cost.

**Bluetooth** – to be used for audio video file transfer, incoming call notification and other standard Bluetooth features.

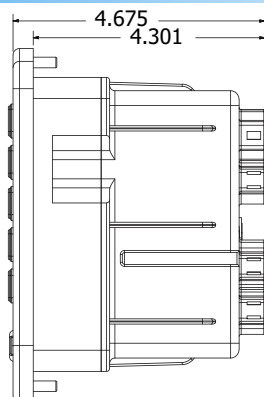
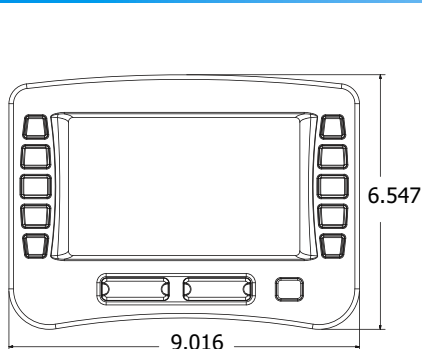
**USB / SD Card Input** – There are (2) two USB and (2) SD ports on the Faria Maestro VII.

**Cell Phone Tethering** – Use your tethering cell phone to connect to the internet.

**Remote keypad** – LCD screen navigation and actuation will be accessed via remote control pad.

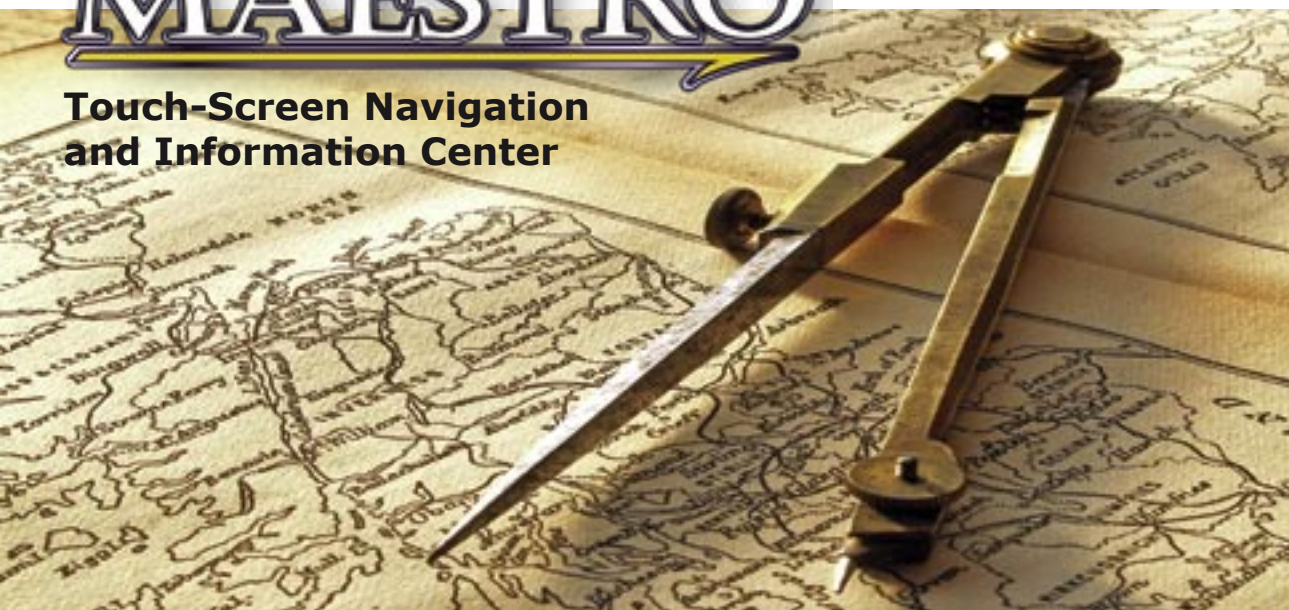


## Dimensions



# MAESTRO™

## Touch-Screen Navigation and Information Center



More than just another sophisticated chart plotter or “gee, whiz” gadget, the Faria Maestro™ is an extraordinary, integrated nautical information system.

All operated effortlessly by Touch-screen Command!

Move your fingers across an official NOAA chart to automatically create way points, access matching Aerial photos, or underwater landscapes. Receive and send e-mail. Monitor critical systems locally and even track and monitor your location on a remote web site.

Maestro™ gives you all the information needed to keep you headed in the right direction. Its unsurpassed simplicity allows you to become a navigation expert instantly.

The intuitive Touch-screen Command system helps you outline your course, conditions and contours with the touch of your finger. The precise charts and visuals will keep you confident whether planning a long voyage or enjoying the waters close to home.



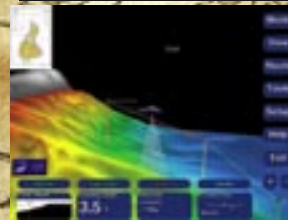
Introducing the first true “marine computer system.” Designed to meet the demanding requirements of the recreational boater. The Maestro™ system consists of a powerful, compact, sealed, fan-less CPU, a high resolution TFT daylight readable touch-screen and is powered by Faria’s industry-leading navigation software suite.

### Features

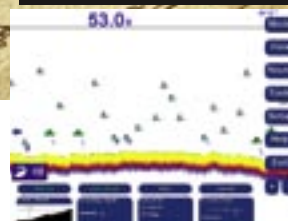
- Color Radar
- Improved 3D Fish Finder & Sonar
- Chart Plotter
- Advanced Navigation and Nav Photos
- Worldwide Satellite Communications
- XM Weatherwrx Weather
- Up to 4 Camera displays
- Pre loaded US charts, Coastal Topo maps and Contour 3D Charts
- Internet Connectivity
- Engine Monitoring for most engines
- 3.5.3 Software Release
- Available with IR 12.1” or 15” screens.



Nautical Charts



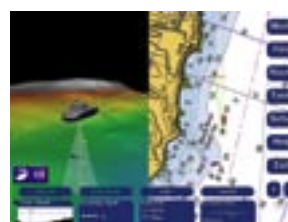
Rainbow Contour  
Depth sounder



Fish Finder



Navigation Overlay



True Split Screen



Tides and Currents



Internet and e-mail



# Depth Sounders

from Faria Marine Instruments



Dual Temperature  
Depth Sounder



Depth Sounder

## Features:

- Depth Range: 61 meters (199 feet)
- Deep and Shallow water alarms
- Programmable Keel off-set
- Automatic Gain control
- Back lighting for maximum night vision;  
- **Blue, White and Red LEDs** available
- Metric or US standard units
- Easy to install!

*Multiple  
LED Backlighting  
options  
available.*

Dual Temp Depth Sounder displays Outside Air temperatures and Water temperatures from 32° F to 200 °F.

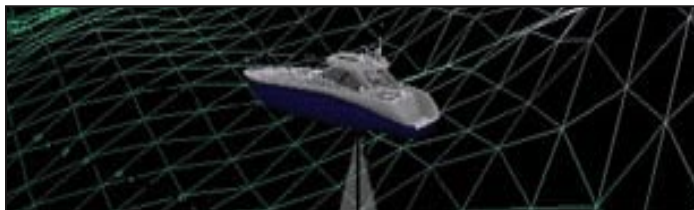
The Faria Depth Sounder is **available in all Faria Styles**, including Gold, Titanium, Polished Stainless Steel, Dress White, Euro, Kronos and many others.

## Fits a standard 2 1/16" gauge mounting hole.

Factory #	Desc.	Style	Kit # with Transducer		
			Transom	In-Hull	Thru-Hull
DS0101	Depth Sounder	Euro Black	12850	12851	
DS0100	Depth Sounder	Euro White	12950	12951	
DS0102	Depth Sounder	Euro Beige	15050	15051	
DS0103	Depth Sounder	Euro Beige SS	15150	15151	
DS0112	Depth Sounder	Coral	13050	13051	
DS0114	Depth Sounder	Dress White	13150	13151	
DS0110	Depth Sounder	Chesapeake SS White	13850	13851	13894
DS0111	Depth Sounder	Chesapeake SS Black	13750	13751	13795
DS0100	Depth Sounder	Chesapeake White	12950	12951	
DS0101	Depth Sounder	Chesapeake Black	12850	12851	
DS0101	Depth Sounder	Professional Red	12850	12851	
DS0109	Depth Sounder	Signature Gold	14550	14551	
DS0104	Depth Sounder	Spun Silver	36150	36151	
DS0108	Depth Sounder	Regal Gold	17150	17151	

Factory #	Desc.	Style	Kit # Transom with Temp Sender
DS1009	Dual Temp. Depth Sounder	Dress White	13154
DS1004	Dual Temp. Depth Sounder	Chesapeake SS White	13852
DS1002	Dual Temp. Depth Sounder	Chesapeake SS Black	13752

Faria Engineers have incorporated the latest microprocessor technology and proprietary software designed to take advantage of Air Mar's high performance transducers. As a result this depth sounder outperforms all others on the market in its high speed capabilities and accuracy when faced with various bottom conditions.



The Depth Sounders from Faria offer a 199 foot (61m) depth capability, with an automatic gain control, backlighting for maximum night vision, keel offset, and deep and shallow water alarms.

Depth can be read in meters, and feet. With its oversized back-lit display depth can be easily read in any condition. Audible and Visual alarms let the boater know when a shallow or deep water condition exist. A programmable keel offset lets you adjust the offset from the keel at the display.

The dual display of the Dual Temperature Depth Sounder can also show temperature of the water and the ambient air temp. all from one 2" gauge.

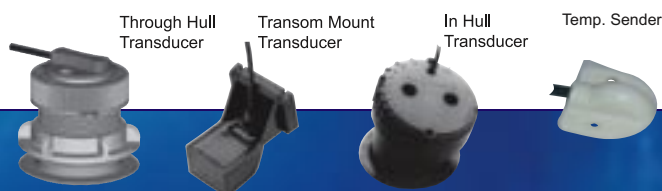
The Dual Temperature Depth Sounder comes with a Transom Mounted Transducer and Temp. Sender.

The Depth Sounder is available with either a Transom, In-Hull or a Through Hull transducer.

## Specifications -

<b>Size</b>	2 1/16" diameter hole	<b>Out of Range Indication</b>
Mount	3" min.	<b>Power Status Memory</b>
Depth behind face plate		Returns Depth Sounder to last Power on status.
<b>Display</b>		<b>Quick Set Mode</b>
DTDS	2 level multiple character LCD	Allows rapid adjustments of settings using the three easy to use push buttons.
Depth Sounder	3-character LCD	<b>Icon Display</b>
<b>Backlighting</b>		Icons provide clear indication of status and alarms.
Red colored diffused lighting for display.		<b>Operating Voltage</b>
<b>Water Integrity</b>		10 vDC to 16.5 vDC.
Front will withstand direct water spray.		<b>Operating Temperature</b>
<b>Alarm</b>		-40° F to 185° F (-40° C to 85° C)
Audio and visual alarm indicates shallow or deep water conditions exist.		<b>Current Drain</b>
<b>Depth Readings</b>		90 mA max. with supplied transducer.
3 to 199 Feet		
1 to 61 Meters		
0.5 to 32 Fathoms		
<b>Keel Offset</b>		
Allows you adjust offset from keel at display.		

## Harnesses and connectors included.



All Faria Marine Instruments comes with a Limited Lifetime Warranty see [www.faria-instruments.com](http://www.faria-instruments.com) for details.



P.O. Box 983 • Uncasville, CT 06382 Tel: 860-848-9271 Fax: 860-848-2704

fm-001-0030 rev d 9/2010

# Standard Styles

from Faria Marine Instruments



Euro



Euro White



Euro Biege



Euro Biege  
SS



Dress White



Nantucket



Coral



Professional  
Red



Chesapeake  
Black



Chesapeake  
White



Chesapeake  
Black SS



Chesapeake  
White SS



Regal Gold



Proformance  
SS



Kronos



Signature  
Gold

All Faria Marine Instruments comes with a Limited Lifetime Warranty see [www.faria-instruments.com](http://www.faria-instruments.com) for details.



P.O. Box 983 • Uncasville, CT 06382 Tel: 860-848-9271 Fax: 860-848-2704

fm-001-0026 rev b 10/2009



# Classic Styles

from Faria Marine Instruments



Spun  
Gold



Spun  
Silver



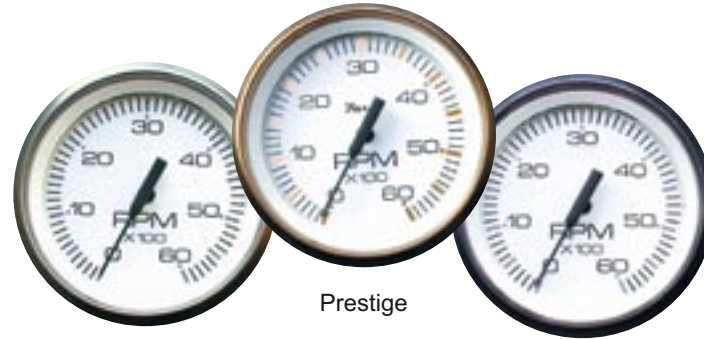
Euro Biege  
Gold



Euro White  
Gold



Newport



Prestige



Signature  
Gold Titanium



Heritage

All Faria Marine Instruments comes with a Limited Lifetime Warranty see [www.faria-instruments.com](http://www.faria-instruments.com) for details.



P.O. Box 983 • Uncasville, CT 06382 Tel: 860-848-9271 Fax: 860-848-2704

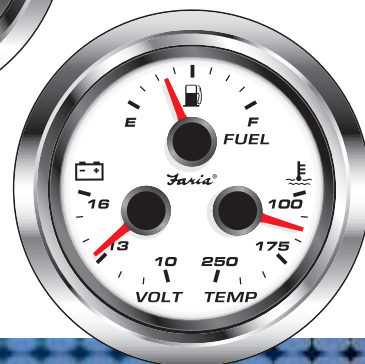
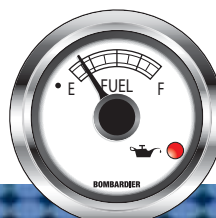
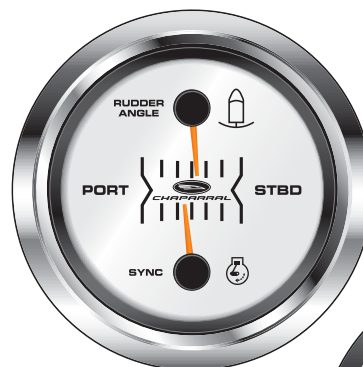
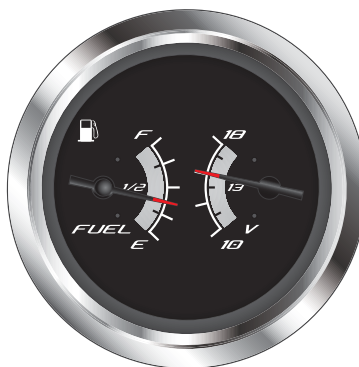
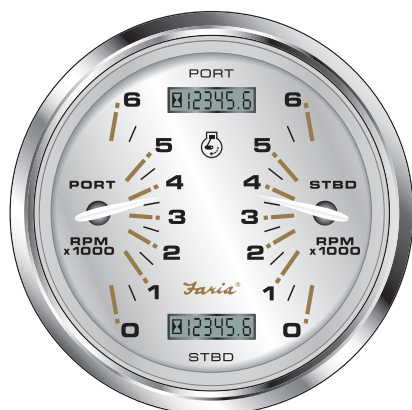
fm-001-0033 rev a 7/2008

# Multi-function GAUGES

from Faria Marine Instruments



Innovative Design



How can Faria Marine  
help you simplify your  
dash?

All Faria Marine Instruments comes with a Limited Lifetime Warranty see [www.faria-instruments.com](http://www.faria-instruments.com) for details.



P.O. Box 983 • Uncasville, CT 06382 Tel: 860-848-9271 Fax: 860-848-2704

fm-001-0046 rev b 10/2009



***Change the color of the  
bezel, Add your logo,  
Change the pointer. . .***



Faria can customize any gauge to fit your needs.  
With 1000's of possible combinations and custom dial prints the possibilities are endless.

All Faria Marine Instruments comes with a Limited Lifetime Warranty see [www.faria-instruments.com](http://www.faria-instruments.com) for details.



P.O. Box 983 • Uncasville, CT 06382 Tel: 860-848-9271 Fax: 860-848-2704

fm-001-0066 rev a 9/2010

# Contour Gauges

from Faria Marine Instruments



## **Contour**

Back-Lighted Aluminum Dials with Bold White Graphics on the Mask, Stainless Steel Bezels and Red Back-lit Pointers.

Reminiscent of Automotive styles, this style could have walked right off the SEMA or IAAE Tradeshow floor. Multi-level formed graphics give you the feeling you could reach right into your dash. Back-lit pointers and Stainless bezels offer a look of elegance. Add a little distinction to your dash with the new Faria Contour Gauges.

Highly customizable. These gauges can be individualized to fit your graphics and color requirements.



All Faria Marine Instruments comes with a Limited Lifetime Warranty see [www.faria-instruments.com](http://www.faria-instruments.com) for details.



P.O. Box 983 • Uncasville, CT 06382 Tel: 860-848-9271 Fax: 860-848-2704

fm-001-0057 rev a 10/2009



# Product Enhancements

from Faria Marine Instruments



## Twist-on Back Clamp

Reduces Installation Time.  
Multiple Harness Options.  
Patent Pending Twist-on  
Back Clamp.



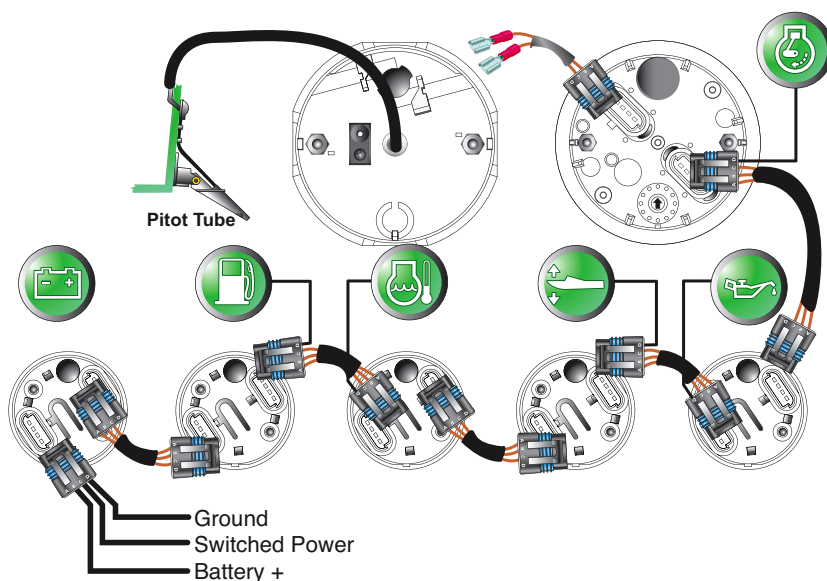
## Custom Quick Connect - Water Resistant Connectors

Deutsch or  
Packard connectors



Improved Reliability, Reducing  
Warranty Claims.  
Eliminates Hardware.  
Available In All Faria® Styles.

## Connectorized Cases



Deutsch



Packard



Faria CN0010



## Fog-Resistant Lens

Faria's Fog Resistant Gauges offer readability that is retained even under very humid conditions.

Utilizes polycarbonate and glass lenses with a scratch resistant coat that will not discolor or degrade.

Backed by a 12-month warranty.



All Faria Marine Instruments comes with a Limited Lifetime Warranty see [www.faria-instruments.com](http://www.faria-instruments.com) for details.



P.O. Box 983 • Uncasville, CT 06382 Tel: 860-848-9271 Fax: 860-848-2704

fm-001-0048 rev a 9/2008

**Thomas G. Faria Corporation**  
World Class Instrumentation

## Online Returns Form

**Important Information**  
Please read the following information carefully. We cannot process your return unless we have all the necessary information. If you simply say the item is "funky" this will not give us the information. By providing us with complete information you can help speed up the time it takes to complete the repair.

Please tell us...

- Brief description on how it failed
- What appears to be the problem on visual inspection?
- How long was it working for?
- Application information: e.g. "This item is being used in the following application..."

**Customer Information**

First Name:  Last Name:   
 Street Address:  Additional Address:   
 City:  State:   
 Country:  ZIP/Post Code:   
 Phone:  Email:   
 User Name (5 to 16 character):  Password (up to 16 characters):

**Item Details**

Make of Boat:  Year of Boat:   
 Item:  Part No.:  Qty:  Use the best definition that fits your gauge.

Use the **POWER** of the internet to get a quick response if your Faria Marine Instrument fails to work.

To submit a Warranty Claim, go to our website; [warranty.faria-instruments.com](http://warranty.faria-instruments.com) select "Place a warranty claim here" and complete the form.

We put the power in your hands to serve you better.

**Faria**® MARINE INSTRUMENTS

**[www.faria-instruments.com](http://www.faria-instruments.com)**  
**or call 860-848-9271**

P.O. Box 983 • Uncasville, CT 06382 Tel: 860-848-9271 Fax: 860-848-2704

fm-002-0003 rev F 9/2010