

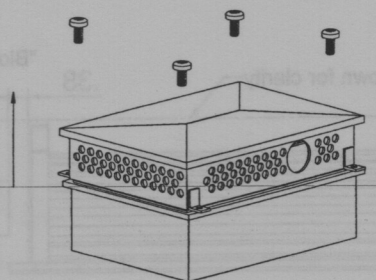
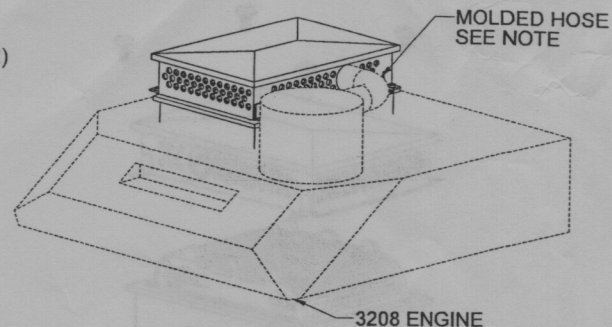


## HIGH-AIR PERFORMANCE FILTER INSTALLATION INSTRUCTIONS WALKER PART 1001094 CATERPILLAR 3208TA ENGINES (375 HP MAX)

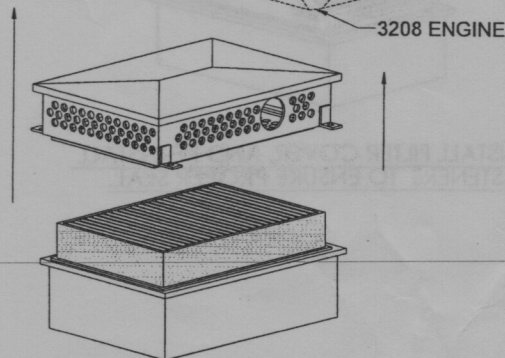
### 1. MAIN ELEMENT REMOVAL:

- \* Disengage fasteners to remove the filter housing cleaner cover. (1.1-1.2)
- \* Gently pull foam filter to disengage the seal. (1.3A)
- \* Remove underlayer support (1.3B)

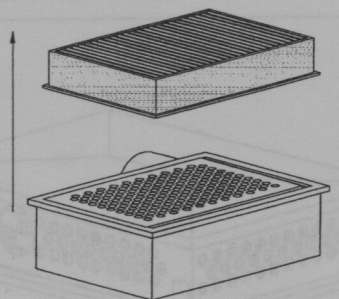
\* BE CAREFUL TO TO MINIMIZE THE AMOUNT OF DUST THAT BECOMES DISLODGED FROM THE ELEMENT AND PLENUM WHEN REMOVING.



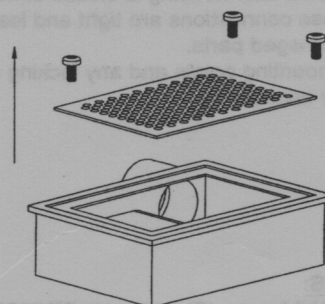
1.1 REMOVE RETAINING SCREWS



1.2 REMOVE AIR FILTER HOUSING



1.3A REMOVE FOAM INSERT  
AND DISENGAGE SCREWS  
TO RELEASE SUPPORT CAGE,  
DISCARD AFTER REMOVAL.



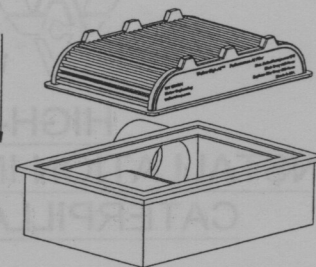
1.3B REMOVE UNDERLAYER  
SUPPORT

### 2. AIR CLEANER HOUSING:

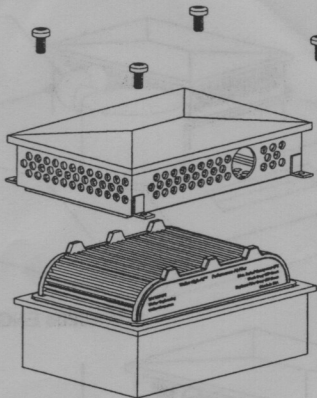
- \* Use a damp cloth to ensure that all dirt and debris is removed from the inside of the housing.
- \* Care should be used. Note: Any dirt transferred to the inside of the outlet tube will directly enter the engine causing wear.
- \* After cleaning, check the filter housing for damage - replace damaged parts before using engine.

### 3. ELEMENT REPLACEMENT:

- \* Check new element for damage prior to installing the air cleaner.
- Do not install a damaged element.
- \* Lubricate sealing surface with a thin layer of Walker sealing grease or alternatively apply a small amount of clean engine oil.
- \* Assemble the new element to the housing keeping it centered to minimize the risk of dislodging dirt / debris.
- \* Reinstall the air cleaner cover and ensure that the **retaining screws are fully engaged**.



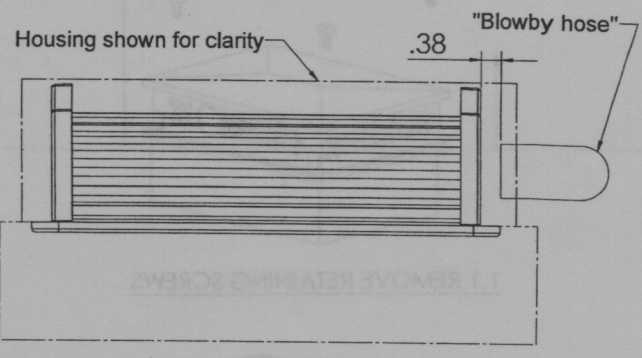
#### 3.1 INSTALL NEW WALKER FILTER PART 1001094



#### 3.2 INSTALL FILTER COVER, AND RE-INSTALL FASTENERS TO ENSURE PROPER SEAL.

**Important Note:** Check to see that molded rubber "blowby" hose is **not** positioned against side of Walker Filter.

**TRIM** end of hose so that it is 3/8" from side of filter.

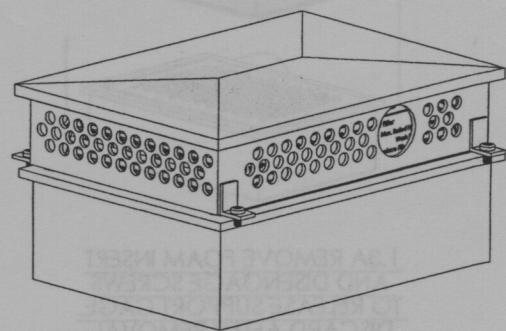


### 4. SYSTEM CHECKS:

- \* After re-assembly, but before starting the engine, carry out the following checks:
- \* Check air cleaner to ensure filter housing is closed correctly.
- \* Check that all rubber hose connections are tight and leak free. Replace any worn or damaged parts.
- \* Check that air cleaner mounting points and any locking clips are secure and properly engaged.

### SERVICE INSTRUCTIONS:

- \* Wash element every 250 hours. (Cleaning Kit DDF9000)
- \* Replace every 500 hours or 3 years.
- \* Use Walker sealing compound # CD955 around filter sealing surface if available.



#### 4.1 REASSEMBLED WITH NEW FILTER INSTALLED.