

***SeaWard***

PRODUCTS, INC.

12423 FLORENCE AVE.  
P.O. BOX 3448  
SANTA FE SPRINGS, CA 90670  
PHONE: (213) 944-9841

**ELECTRIC  
STOVES**

# OWNER'S MANUAL

FOR ELECTRICALLY OPERATED STOVES

## PRINCESS

MODELS:    2342, 2142  
                  3342, 3142  
                  3542

## 3 BURNER ELECTRICAL INSTALLATION

### ELECTRICAL REQUIREMENTS

1. This appliance is internally wired for 3.0 KW rating which permits the use of either the top left element or the oven. The appliance may be converted to a 4.0 KW rating by a qualified electrician. This will permit all elements to be operated at one time. Conversion can be made subject to proper branch circuit requirements noted below. (Conversion instructions are located in the inside surface of the forward wiring compartment.)

MODELS	VOLTAGE	RATING (KW)	BREAKER SIZE (AMPS)	MINIMUM* WIRE SIZE (AWS)
3342111, 3342112	120	3.0	20	12
	(2 wire)	4.1	30	10
3342121, 3342122	240	3.0	15 (per leg)	14
	(3 wire)	4.1	15 (per leg)	14
3342131	240	3.0	15	14
	(2 wire)	4.1	20	12

\*Wiring from the junction box to the distribution panel may include any wire mentioned in Title 33 Code of Federal Regulations, Part 183, Subpart I, Section 183.435.

2. A terminal adequate for a number 8 AWG conductor is provided for use when the boat has a lightning protection system.

**NOTE: Do not use ground link (bridge) between ground and neutral.**

3. Connect leads from flexible conduit to a junction box conveniently located for service or inspection.

### MOUNTING

1. Seven (7) screws are provided for securing range to cabinet. Four (4) screws to secure sides to counter top and three (3) screws to secure lower trim to cabinet.

## 2 BURNER ELECTRICAL INSTALLATION

### ELECTRICAL REQUIREMENTS

1. This appliance is rated 2.95 KW. The branch circuit requirements are as follows:

MODEL	VOLTAGE	RATING (KW)	BREAKER SIZE (AMPS)	MINIMUM* WIRE SIZE (AWG)
2342111	120	2.95	20	12
	(2 wire)			
2342121	240	2.95	15 (per leg)	14
	(3 wire)			
2342131	240	2.95	15	14
	(2 wire)			

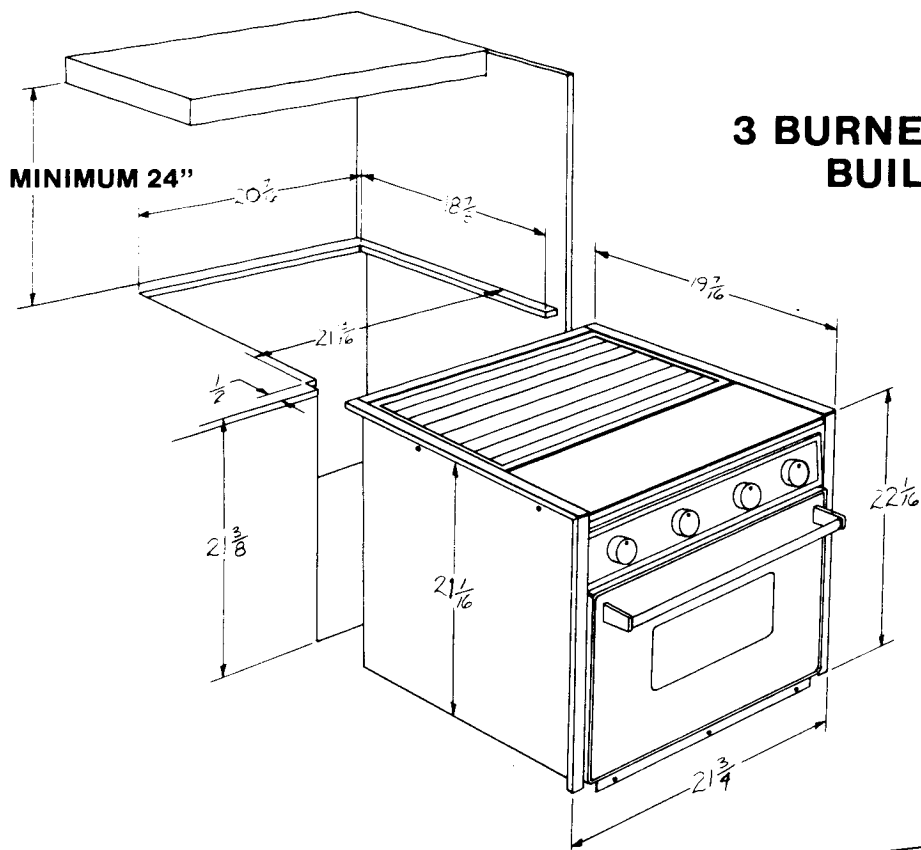
\*Wiring from the junction box to the distribution panel may include any wire mentioned in Title 33 Code of Federal Regulations, Part 183, Subpart I, Section 183.435.

2. A terminal adequate for a number 8 AWG conductor is provided for use when the boat has a lightning protection system.

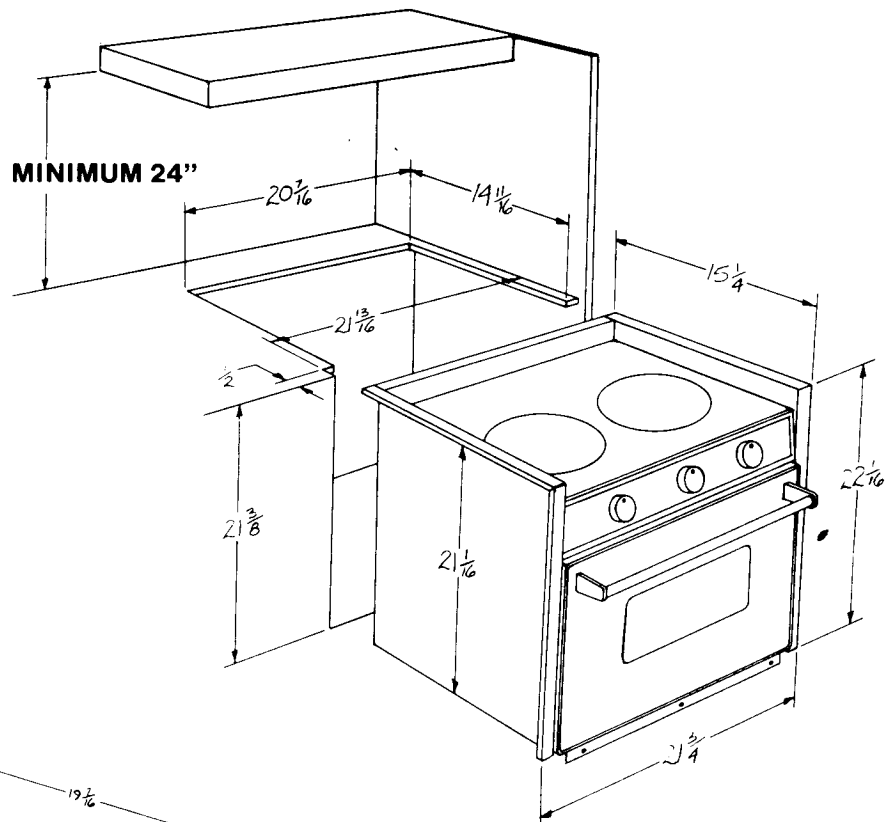
**NOTE: Do not use ground link (bridge) between ground and neutral.**

### MOUNTING

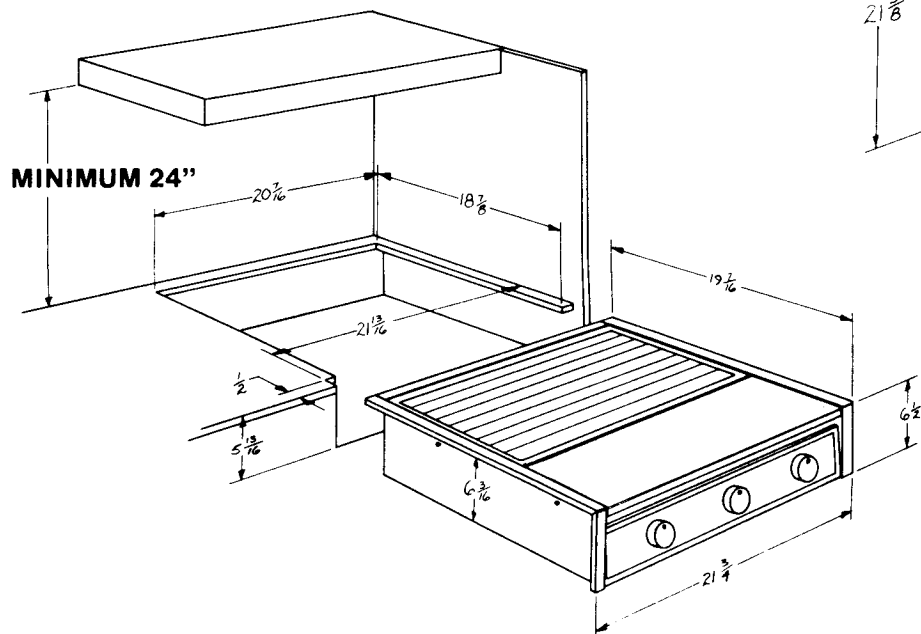
1. Seven (7) screws are provided for securing range to cabinet. Four (4) screws to secure sides to counter top and three (3) screws to secure lower trim to cabinet.



**3 BURNER #3342  
BUILT-IN**



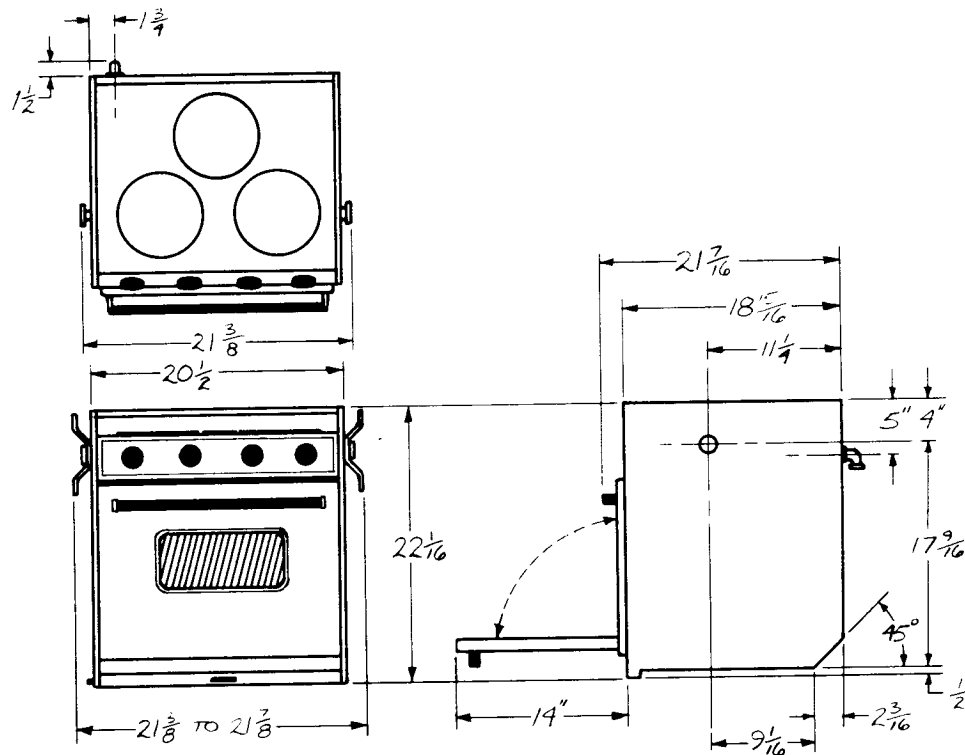
**2 BURNER #2342  
BUILT-IN**



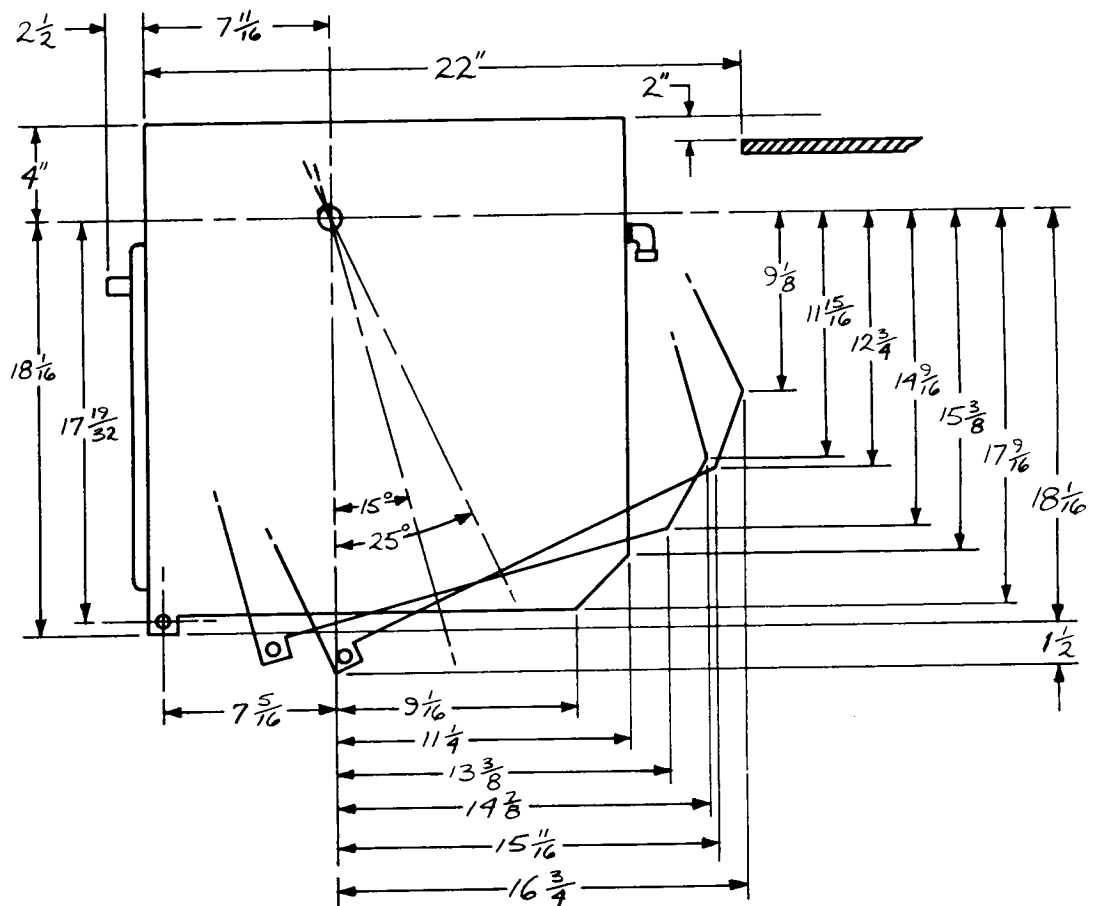
**3 BURNER #3542  
(WITHOUT OVEN)**

**BUILT-IN**

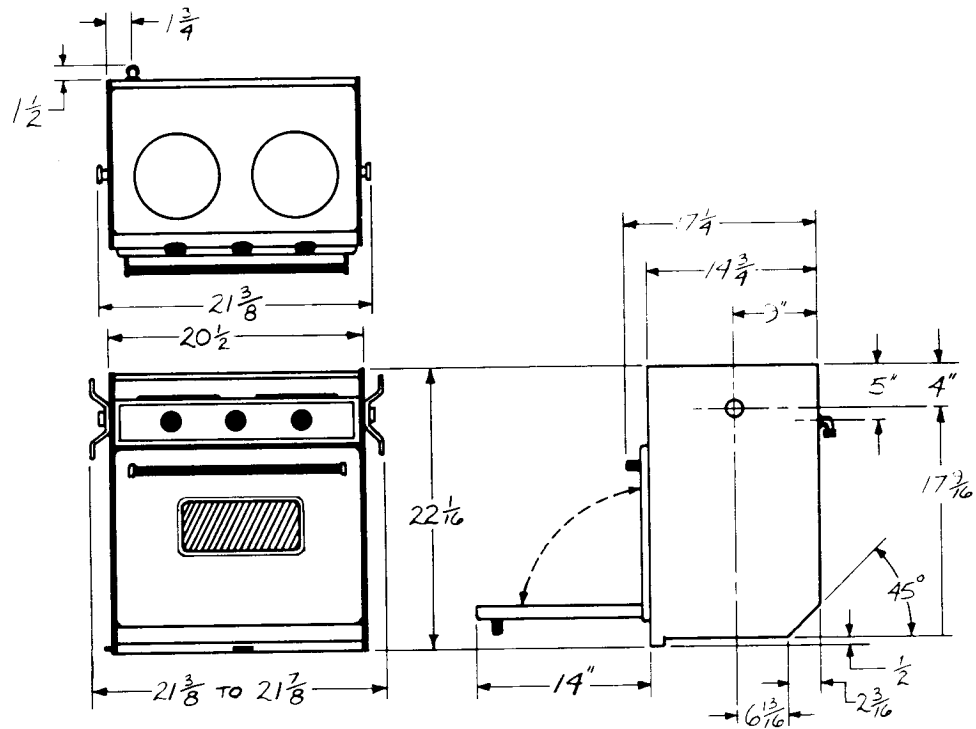
### 3 BURNER STOVE WITH OVEN #3142



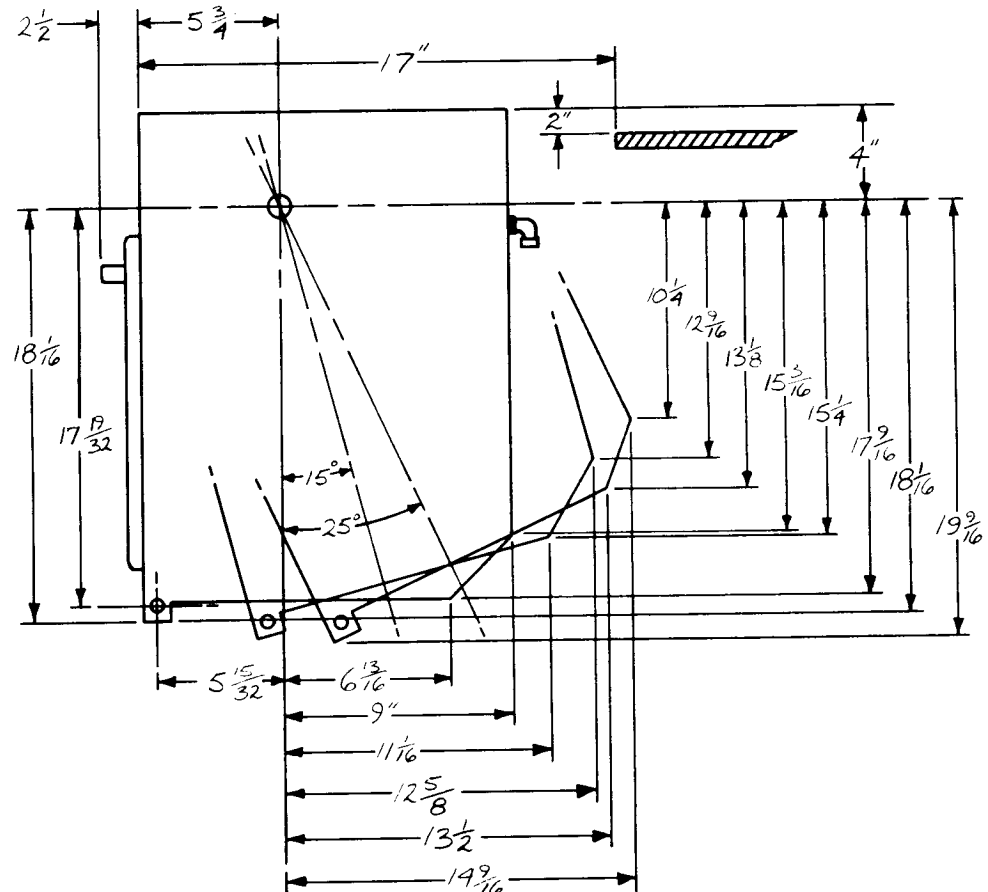
## GIMBAL INSTALLATION



## 2 BURNER STOVE WITH OVEN #2142

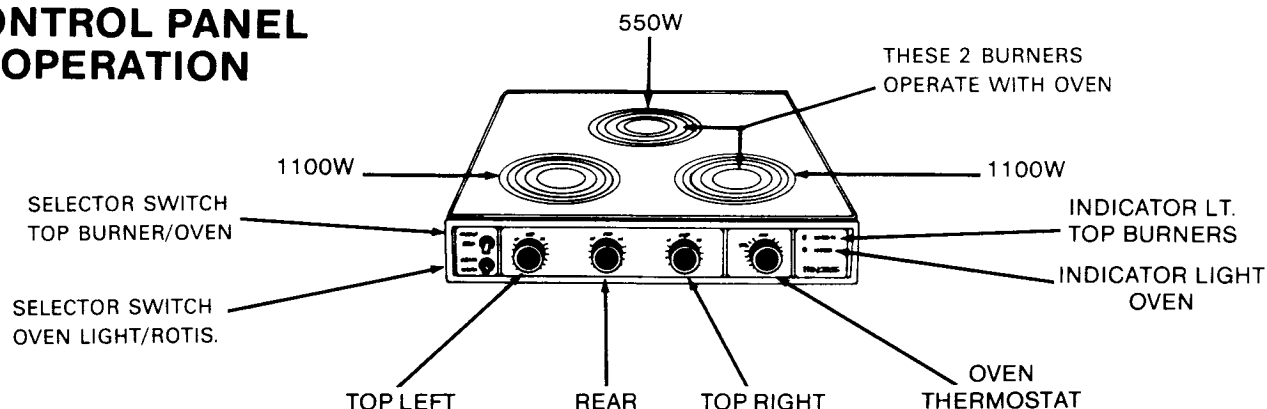


## GIMBAL INSTALLATION



# 3 BURNER ELECTRIC STOVE WITH OVEN

## CONTROL PANEL OPERATION



Operation of the top/oven selector switch on standard 3.0 KW stoves with oven. When the oven selector switch is in the oven position the following will operate:

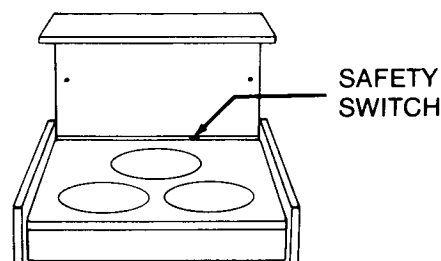
Bake or Broil

Top rear element 550W, top front right element 1100W.

In the top position all three top elements will operate.

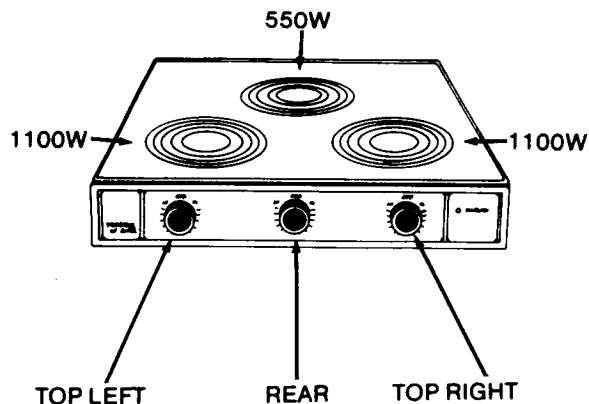
If the entire system is to be used at the same time the stoves system must be converted to 4.0 KW (Please see instructions to be found on the inside of wiring harness cover). This conversion should be performed by a qualified electrician.

**ELECTRIC STOVE WITH A LIFT COVER HAS A SAFETY SWITCH LOCATED AT THE RIGHT REAR SIDE OF THE STOVE TOP. THE TOP BURNERS WILL NOT WORK UNTIL THE LIFT COVER IS IN UP-RIGHT POSITION TO ACTIVATE THE SWITCH. MAKE SURE THE LIFT COVER IS UP-RIGHT EVENLY. IT HAS TO BE DOWN TO ITS BASE IN ORDER TO ACTIVATE THE SWITCH.**

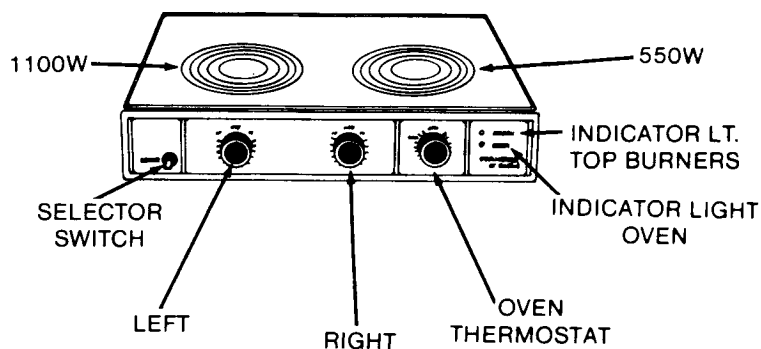


## CONTROL PANEL OPERATION

### 3 BURNER ELECTRIC STOVE WITHOUT OVEN



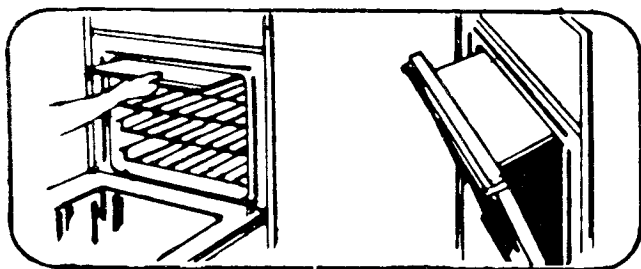
### 2 BURNER ELECTRIC STOVE WITH OVEN



## BROILING

The range is equipped with broiler shield above broiler element. pull the shield out about 4 inches as shown in the illustration.

After broiling is complete, replace the broiler shield to the "IN" position by simply lifting the shield and pushing in.



## SAFETY PRECAUTIONS TO BE OBSERVED WHEN USING YOUR RANGE

In case of future emergency, know where the main range electric disconnect are located. Have the installer show you.

Use range only for cooking operations. It will work better and longer if treated with care and used as intended. Do not overload.

Do not operate a range that is partially disassembled or when some part is missing or broken.

Keep your range clean and in good repair. Repairs should be done only by qualified personnel. Attempts to repair your range by others could result in damage or hazard.

Use preventative measures to avoid injury to children. Do not leave small children unattended near a range when the range is in use. As children mature enough to learn, instruct them in the safe, correct use of the range.

Remember, your range is a cooking device and some parts are intended to get hot. Train yourself to avoid the hot surfaces.

## CARE AND CLEANING

### CHROME AND STAINLESS STEEL

The best way to clean metal surfaces on your range is to wipe them with a damp cloth, then dry thoroughly.

Stubborn spots caused by spillage and discoloration from heat may be removed by the use of lemon juice, vinegar, or chrome polish. Care must be used to keep these away from porcelain enamel surfaces.

NEVER use coarse cleansers, steel-wool scouring pads or metal brushes to clean chrome. These will make deep scratches on chrome. These scratches cannot be removed.

### USE OF ALUMINUM FOIL

IN THE OVEN - Do not use aluminum foil in your oven to cover racks or oven bottom.

IN THE BROILER - Aluminum foil may be used to line the bottom part of the two-piece broiler pan, but if foil is placed over the slotted broiler tray, care must be taken to slit the foil at each slot so that drippings and excess grease can drain into the pan below.

### INSIDE OVEN AND BROILER

Racks and broiler pan may be removed and cleaned in your sink with other cooking utensils. The inside surfaces of the oven is porcelain enamel and should be cleaned by the method given in enamel section.

Regular cleaning with a soft cloth and a warm detergent solution is generally enough to keep your oven clean and beautiful. This is done when the range is cool. Use a dry cloth or paper towel to clean splatters and spills when surfaces are warm.

### SURFACE PLUG-IN ELEMENTS

Spillovers will not harm the elements of the surface units. However, if spillovers are allowed to accumulate they harden and become difficult to remove. Allow unit to cool and then wipe with a damp cloth. To dry unit, operate at full heat for a short time. Grease is harmful to electric circuits and should not be allowed to accumulate. Operate top units at full heat to loosen such matter before cleaning. Units may be wiped with waxed paper once a week, to keep looking like new. The top section of each unit may be lifted up for easy cleaning.

**CAUTION:** Before removing elements or raising top be sure to shut off power to element and allow to cool.

To unplug, tilt and pull forward. When replacing, make sure that connection is tight and that unit is resting properly in the reflector pan.

REFLECTOR PANS are removable. First, remove electric unit, then reflector pans lift out. To clean, wash in hot, soapy water. To remove burned spots, scour with a fine, soap-filled steel wool pad. This may leave very fine scratches but they resemble the patina on good silver. If you object to this, use silver polish.

**DO NOT SOAK REMOVABLE HEATING ELEMENTS -**  
Heating elements should never be immersed in water.

### GLASS SURFACE

The extra large glass window is built to stay FOG-FREE. To keep it clean just wipe with a moist soft cloth and dry.

**CAUTION:** Do not clean the window with water while the oven is warm. The glass is strong, but radical heat changes or a sharp blow will crack it. Use care in cleaning.

### NOTICE

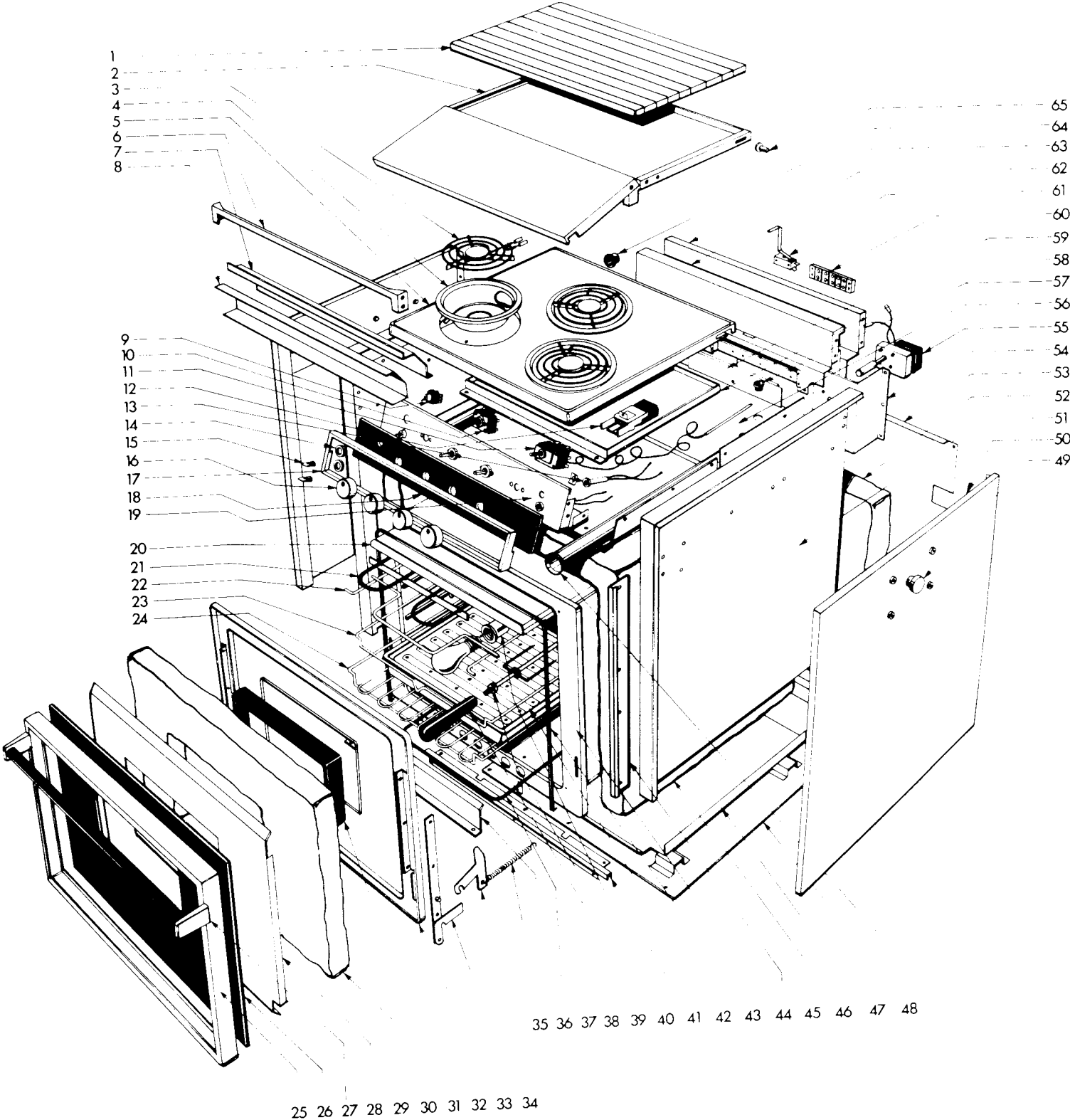
When the unit is in operation the outside surfaces will become hot and care must be taken to avoid contact with panel surfaces. Handles and knobs will remain comfortable to the touch.

Slight smoke may come from the vent holes around the stove when first turned on. This is due to ceramic cement and will disappear after 5-10 minutes.

### PORCELAIN ENAMEL

Porcelain enamel is glass fused on steel at very high temperatures. It is not extremely delicate, but must be treated as glass. Sharp blows, radical changes in temperatures, etc., will cause the enamel to chip or crack. Some foods contain acid which will dull the finish of enamel. Vinegar, lemon juice, tomatoes, and milk are a few. To avoid this happening, simply wipe surface clean immediately when any food is spilled on the enamel. Remember, the surface is glass and must be given consideration in cleaning. Steel-wool pads and coarse gritty cleansers will scratch and wear down the surface. Any gentle kitchen cleansing powder or chemical grease remover will do a good job and yet not harm the finish.

**3 BURNER ELECTRIC STOVE WITH OVEN**  
**MODELS: 3142, 3342**





# 3 BURNER ELECTRIC STOVE W/OVEN MODEL #3342, 3142

ITEM NO	PART NO.	DESCRIPTION			
1.	72320	Cutting Board, 3342	35.	72234	Shield, Element
2.	72291	Lift Cover, Rear, 3342	36.	72561	Element, Bake, 120V
	72292	Lift Cover, Front, 3342		72562	Element, Bake 240V
	80140	Lift Cover Assy., 3342	37.	72324	Handle, Rotis.
3.	72401	Element, Top, Front, 1100W, 120V	38.	72322	Spit, Rotis.
	72400	Element, Top, Rear, 550W, 120V		72323	Folk, Rotis.
	72403	Element, Top Front, 1100W, 240V	39.	72569	Socket, Oven Light
	72402	Element, Top, Rear, 550W, 240V		72335	Light Bulk, Oven, 120V
4.	72233	Bowl, Element, W/Clips		72336	Light Bulb, Oven 240V
5.	80155	Main Top, SS	40.	72267	Trim, Lower, 3342
	72256	Main Top, Porc.		80175	Trim, Lower, 3142
6.	72286	Sea Rail	41.	72332	Pan, Broil
7.	72317	Cover, Electric		72333	Insert, Broiler Pan
8.	72319	Insulator, Electric Cover	42.	70864	Gasket, Oven
9.	72525	Switch, On-Off, Selector	43.	80001	Oven Can
	72526	Switch, On-Off-On, Rotis, & Oven Light	44.	72227	Retainer, Filler, 3142
	72527	Switch, On-Off		72222	Filler, Angle, 3342
10.	72520	Switch, Infinite, 120V	45.		Insulation, Oven Can
	72521	Switch, Infinite, 240V	46.	72296	Shield, Radiation
11.	72522	Thermostat	47.	80145	Bottom, Ext.
12.	72404	Connector Block	48.	72499	Race Way
13.	72523	Indicator Light, 120V	49.	72237	Pin, Gimbal, Assy.
	72524	Indicator Light, 240V	50.	80045	Panel, Side, LH., 3142
14.	72575	Face Nut		80046	Panel, Side, RH., 3142
15.	72550	Handle, Switch	51.	80040	Panel, Side, LH., 3342
16.	72188	Knob		80041	Panel, Side, RH., 3342
17.	72294	Trim, Control Panel	52.		Insulation, Back
18.	72310	Face Plate, W/Rotis.	53.	72279	Panel, Back
	72311	Face Plate, W/O Rotis	54.	72487	Bracket, Mounting, Rotis, Motor
19.	72218	Tray, Componet	55.	72570	Motor, Rotis, 120V
20.	72330	Deflector		72571	Motor, Rotis, 240V
21.	72565	Element, Broil, 120V		72573	Coupling, Rotis.
	72566	Element, Broil, 240V	56.	72223	Burner Box
22.	72328	Rack, Deflector	57.	72300	Gromet, 1/2"
23.	72327	Rack, Rotis.	58.	72315	Drip Pan
24.	72325	Rack, Oven	59.	72318	Plate, Inspection
25.	72198	Frame, Door	60.	72518	Terminal Block
26.	72197	Glass, Oven Door, Blk	61.	72519	Switch, Interlock
27.	72246	Handle, Door	62.	80015	Panel, Upper Back, 3342
28.	72225	Shield, Inner Door	63.	80016	Panel, Upper Back, 3142
29.		Insulation, Door	64.	72307	Plug, 1 1/8"
30.	70196	Glass, Window, Door, Blk Glass	65.	72596	Hinge Pin
31.	72226	Door Liner			
32.	72446	Hinge Assy., Door, LH			DOOR ASSY.
	72447	Hinge Assy., Door, RH			
33.	72454	Arm, Spring	80011		Door Assy. Black Glass
34.	72215	Spring, Door			(Items: 25,26,27,28,29,30,31,32)

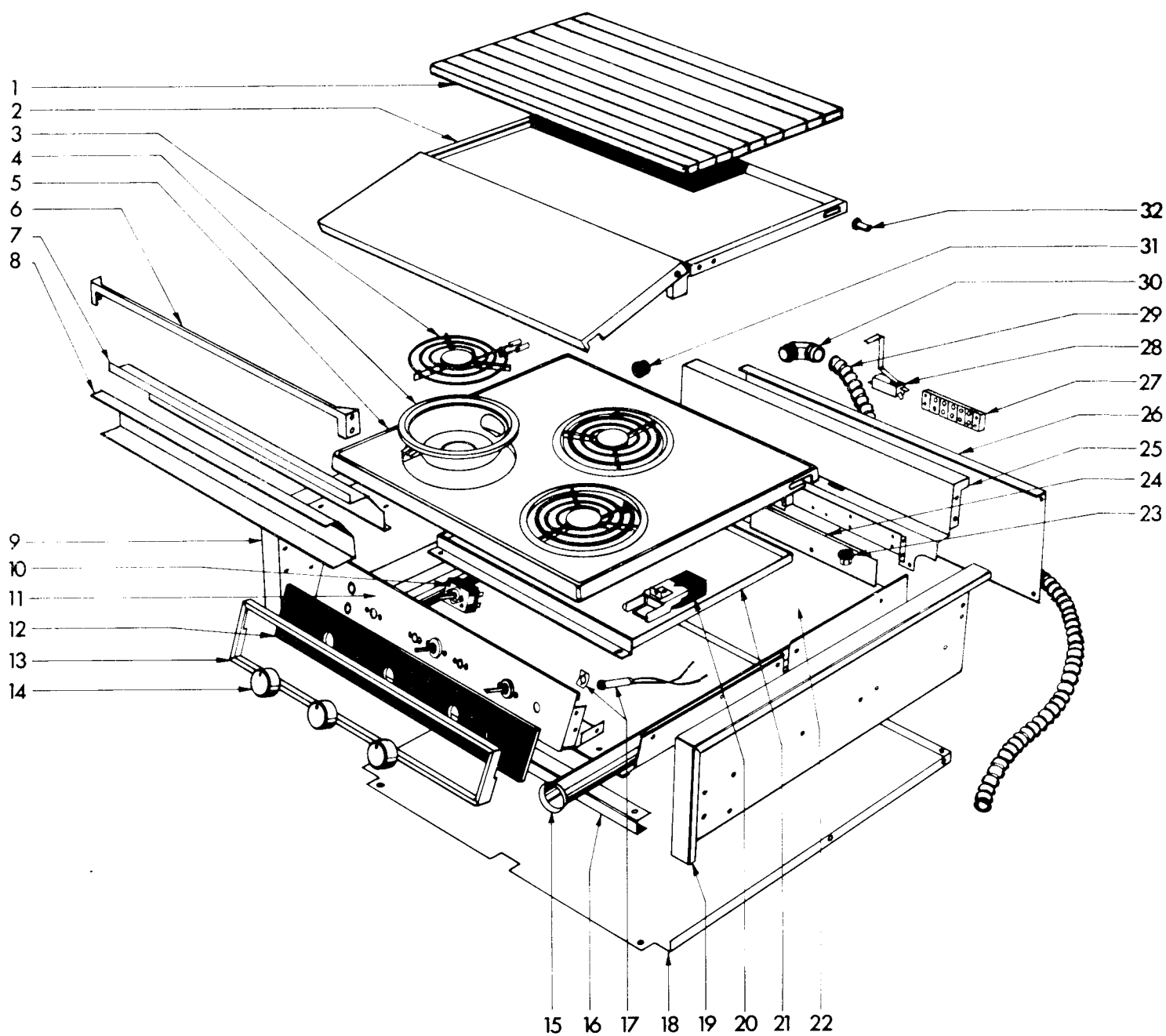
# 3 BURNER ELECTRIC STOVE WITHOUT OVEN #3542

MODEL: 3542

1.	72320	Cutting Board	15.	72499	Race Way
2.	72291	Lift Cover, Rear	16.	72269	Trim, Bottom
	72292	Lift Cover, Front	17.	72523	Indicator Light, 120V
	80140	Assy. Lift Cover		72524	Indicator Light, 240V
3.	72401	Element, Top Front, 1100W, 120V	18.	72209	Bottom, Ext.
	72400	Element, Top, Rear, 550W, 120V	19.	80039	Panel, Side, RH
	72403	Element, Top, Front, 1100W, 240V	20.	72404	Connector Block
	72402	Element, Top, Rear, 550W, 240V	21.	72315	Drip Pan
4.	80155	Bowl, Element	22.	72223	Burner Box
5.	72251	Main Top, SS	23.	72300	Gromet, 1/2"
	72256	Main Top, Porc.	24.	72318	Plate, Inspection
6.	72286	Sea Rail	25.	80015	Panel, Upper Back
7.	72317	Cover, Electric	26.	72281	Panel, Back
8.	72319	Insulator, Electric Cover	27.	72518	Terminal Block
9.	80038	Panel, Side, LT	28.	72519	Switch, Interlock
10.	72520	Switch, Infinite, 120V	29.	72517	Conduit
	72521	Switch, Infinite, 240V	30.	72515	Connector, Conduit, Elbow
11.	72218	Tray, Componet	31.	72307	Plug, 1 1/8"
12.	72312	Face Plate	32.	72596	Hinge Pin
13.	72294	Trim, Control Panel			
14.	72188	Knob			

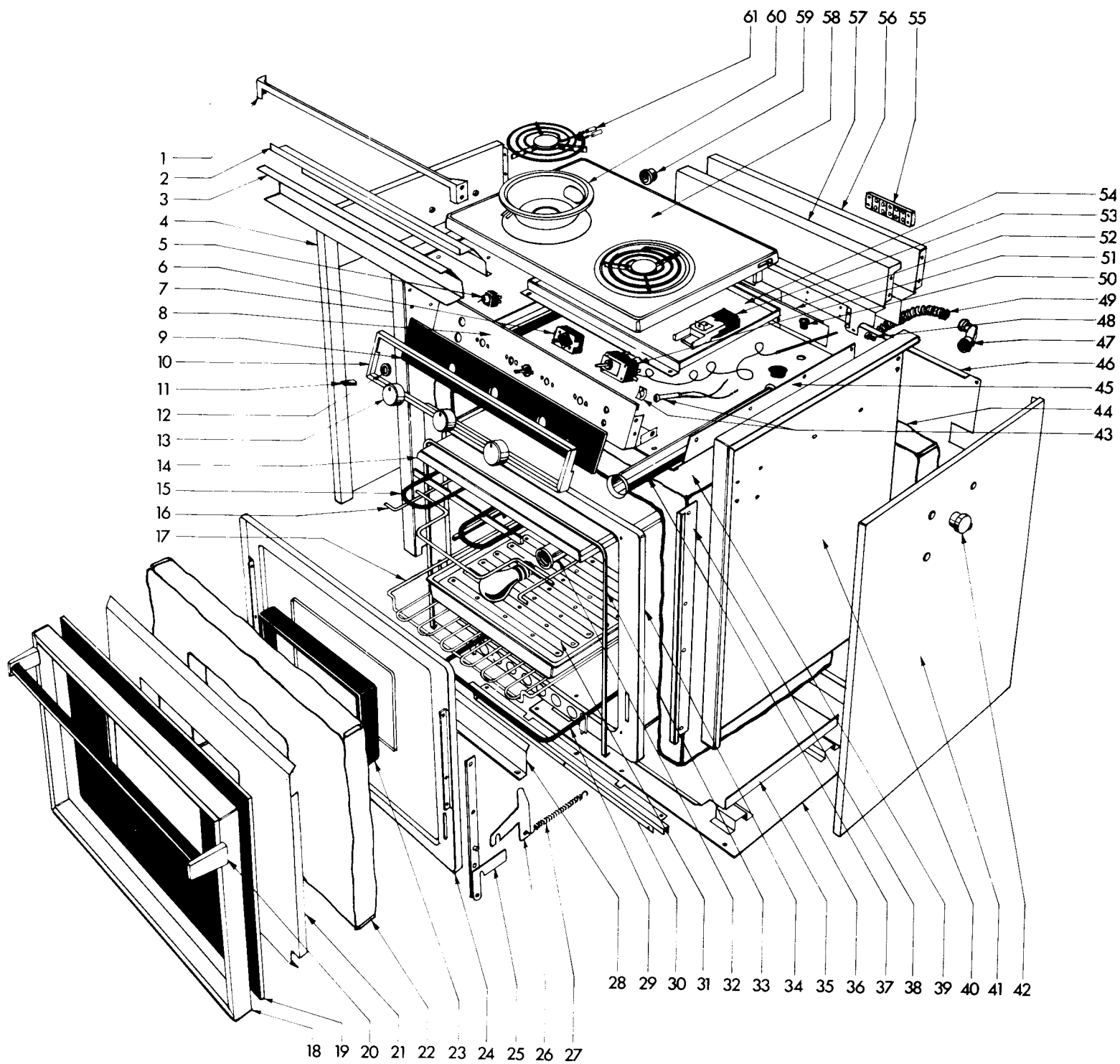
# 3 BURNER ELECTRIC STOVE

MODEL: 3542



# 2 BURNER ELECTRIC STOVE WITH OVEN

MODELS: 2142, 2342



# 2 BURNER ELECTRIC STOVE WITH OVEN #2342, #2142

## PARTS LIST

### MODELS: 2342

1.	72286	Sea Rail	33.	70864	Gasket, Oven
2.	72317	Cover, Electric	34.	80002	Oven Can
3.	72319	Insulator, Electric Cover	35.	72295	Shield, Radiation
4.	80047	Panel, Side, LH. 2142	36.	80170	Bottom Ext.
5.	72525	Switch, On-Off	37.	72498	Race Way
6.	72520	Switch, Infinite, 120V	38.	72227	Retainer, Filler, 2142
	72521	Switch, Infinite, 240V		72222	Filler, Angle, 2342
7.	80042	Panel, Side, LH 2342	39.		Insulation, Oven Can
8.	72218	Tray, Component	40.	80043	Panel, Side, RH. 2342
9.	72313	Face Plate	41.	80048	Panel, Side, RH. 2142
10.	72294	Trim, Control Panel	42.	72347	Pin, Gimbal
11.	72550	Handle, Switch	43.	72523	Indicator Light, 120V
12.	72575	Face Nut		72524	Indicator Light, 240V
13.	72188	Knob	44.		Insulation, Back
14.	72331	Deflector	45.	72217	Burner Box
15.	72565	Element, Broil, 120V	46.	72279	Panel, Back
	72566	Element, Broil, 240V	47.	72515	Connector, Elbow, Conduit.
16.	72529	Rack, Deflector	48.	72596	Hinge Pin
17.	72326	Rack, Oven	49.	72517	Conduit
18.	72198	Frame, Door	50.	72300	Gromet, 1/2"
19.	72197	Glass, Oven Door, BLK	51.	72522	Thermostat
20.	72246	Handle, Door	52.	72318	Plate, Inspection
21.	72225	Shield, Inner Door	53.	72404	Connector Block
22.		Insulation, Door	54.	72314	Drip Tray
23.	70101	Glass, Window, Door	55.	72518	Terminal Block
24.	72226	Door Liner	56.	80018	Panel, upper Back, 2142
25.	72446	Hinge Assy., Door, LH	57.	80015	Panel, Upper Back, 2342
	72447	Hinge Assy., Door, RH	58.	72257	Main Top. SS
26.	72454	Arm, Spring		72287	Main Top Porc.
27.	72215	Spring, Door	59.	72307	Plug, 1 1/8"
28.	72234	Shield, Element	60.	80155	Bowl, Element
29.	72561	Element, Bake, 120V	61.	72401	Element, Top, 1100 W, 120V
	72562	Element, Bake 240V		72400	Element, Top, 550W, 120V
30.	72267	Trim, Lower, 2342		72403	Element, Top, 1100V, 240V
	80175	Trim, Lower, 2142		72402	Element, Top 550W, 240V
31.	72332	Pan, Broil			
	72333	Insert, Broil Pan			
32.	72569	Docket, Oven Light			DOOR ASSY.
	72335	Light Bulb, Oven, 120V			
	72336	Light Bulb, Oven, 240V		80011	(ITEMS: 18,19,20,21,22,23,24,25 )

### REPAIR PARTS

Repair parts listed herein may be ordered through Seaward Products, Inc. Seaward Distributor and Dealers or its Authorized Service Centers.

All parts will be shipped at prevailing prices.

When ordering repair parts, please give the following information:

1. THE PART NUMBER
2. THE PART DESCRIPTION
3. THE MODEL NUMBER OF THE STOVE
4. THE SERIAL NUMBER OF THE STOVE

The model number and the serial number of the stove will be found on the rating plate located on the burner box.

For the nearest Authorized Service Center to you, please contact Seaward Products, Inc.

### CUSTOMER SERVICE

**SeaWard** PRODUCTS, INC.  
12423 FLORENCE AVE.  
P.O. BOX 3448  
SANTA FE SPRINGS, CA 90670  
PHONE: (213) 944-9841