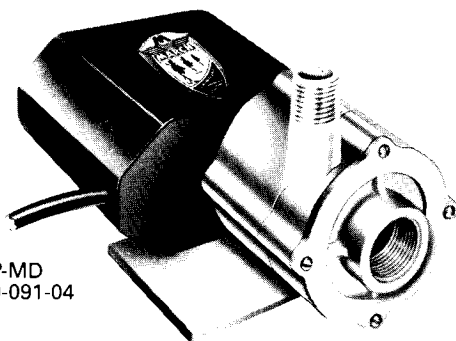


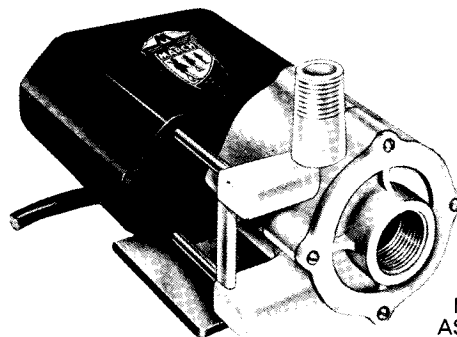
MARCH

INSTRUCTIONS & REPAIR PARTS

FOR MODELS 3CP-MD, AND LC-3CP-MD PUMPS



MODEL 3CP-MD
ASS'Y. NO. 130-091-04



MODEL LC-3CP-MD
ASS'Y. NO. 130-091-05

PUMP CONSTRUCTION AND SERVICING

March "Orbital" Magnetic Drive Pumps eliminate the conventional shaft seals found in most pumps. This means that there is no rotating seal to wear and allow the liquid being pumped to leak out. In addition to this unique "seal-less" design, the pump is hermetically encapsulated in epoxy. This epoxy encapsulation now allows the pumps to be run fully submerged in many liquids. The model LC-3CP-MD pump can be run totally submerged or can be run in open air for complete moisture protection. The model 3CP-MD must be run submerged only.

All these pumps can be serviced with the use of a screwdriver. The only moving parts in the pump other than the motor, is the Impeller-Magnet Assembly. This Impeller-Magnet Assembly rotates on a stationary spindle and up against a thrust washer. This is the only part that can wear out, and may need to be replaced. See the Repair Parts List for replacement parts if necessary.

ELECTRICAL CONNECTIONS AND RUNNING DRY

All models are standard in 115 volt, 60 cycle, 1 phase A.C. All cord sets are U.L. approved 18/3 wire SJT plastic cords. Standard cord length is 6 feet. Twelve foot lengths or longer are available.

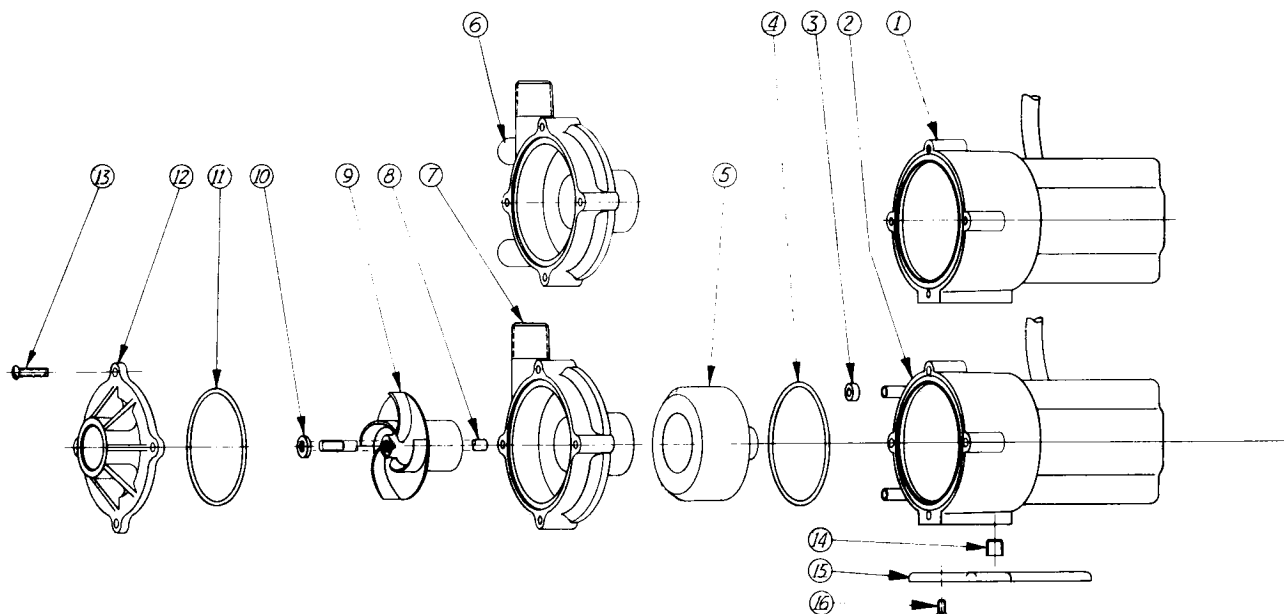
We rely on the liquid being pumped to lubricate the Impeller-Magnet Assembly spinning on the stationary spindle. If the pump is run dry for longer than 60 seconds, the plastic may "freeze" onto the spindle.

PUMP MATERIALS

All Screws are type 18-8 stainless steel.
All "O" Ring Gaskets are Buna N Rubber.
Stationary Spindle is Ceramic.
Motor Bracket is Bronze.
Pump Housing, Cover, and Impeller are Glass Filled Polypropylene.
Thrust Washer is Ceramic.
The LC model has type 316 stainless steel tubes embedded into the epoxy to remove heat from the motor.
For other materials available contact the factory.

RATINGS AND SPECIFICATIONS

MODEL NO.	CONNECTORS		H.P.	ELECTRICAL		G.P.H. AT LISTED HEAD						MAX. HEAD	P.S.I. GAGE	DIMENSIONS			PACK WT.
	Inlet	Outlet		Watts	Amps	1 Ft.	3 Ft.	5 Ft.	6 Ft.	12 Ft.	18 Ft.			Ht.	Wd.	Lg.	
3CP-MD LC-3CP-MD	¾" FPT	½ MPT ¾ O.D.	1/20	120	2.35	510	490	405	385	180	120	19.5 Ft.	8.5	4"	4"	7"	6.5 lbs.



MODEL 3CP-MD AND LC-3CP-MD REPAIR PARTS LIST

ITEM	PART NUMBER	DESCRIPTION	QTY. REQ'D.
1	130-091-03	Epoxy Motor, Bracket, Cord Assembly, 115 Volt	1
2	130-091-02	L.C. Epoxy Motor, Bracket, Cord Assembly, 115 Volt	1
3	125-007-10	Cooling Tube Seal, Neoprene Rubber	2
4	130-025-10	Bracket "O" Ring, Buna "N" Rubber	1
5	130-043-01	Drive Magnet Assembly	1
6	130-019-01	Pump Housing Assembly (LC-3CP-MD)	1
7	130-018-10	Pump Housing (3CP-MD)	1
8	130-024-10	Shaft, Ceramic	1
9	130-020-01	Impeller Assembly	1
10	130-028-10	Thrust Washer, Ceramic	1
11	130-011-10	Cover "O" Ring, Buna "N" Rubber	1
12	130-021-10	Cover	1
13	823-008-10	Screw	4
14	145-026-10	Bracket Pipe Plug	1
15a	125-037-10	Pump Mounting Base	1
15b	125-113-01	Marine Mounting Base w/Grommets	1
16	125-018-10	Base Screws	2

PRICES SUBJECT TO CHANGE WITHOUT NOTICE

LIMITED WARRANTY

March pumps are warranted to the original user against defects in workmanship and materials under normal use for a period of 12 months when used on room temperature water. See complete March limited warranty statement on card F4109 which is packed with this pump.